

LUXIONA

LUXIONA Poland magazine

EVENTS ● ● ●
REALIZATIONS ● ● ●
TECHNICAL KNOWLEDGE ● ● ●
PRODUCTS ● ● ●

Issue number 10

troll metalarte Sagelux

LUXIONA POLAND AN OFFICIAL PARTNER OF



ASSOCIATION OF POLISH ARCHITECTS



FROM THE EDITOR

With a great pleasure we are handing over the 10th edition of LUXIONA magazine. In this edition we would like to present You our subsequent prestigious realizations: office building of Polkomtel Company in Warsaw, Cultural Centre in Kozenice and Port Praski town in Warsaw.

In few words we will summarize this year Technical Conferences, which took place during summer in hotel in Mikorzyn. We will introduce You preliminaries to the Technical Olympics of Innovations and Inventions. We had a pleasure to be the sponsor of this event.

In our newest issue we will present a novelty product which is the family of Artshape LED architectonic luminaires.

We wish you a pleasant reading.

Editors of LUXIONA magazine



- p. 4 ● Introduction – Rafal Wesolowski, General Director of LUXIONA Poland
- p. 6 ● Summary of Conferences organized by LUXIONA Poland in the season of summer 2017
- p. 23 ● LUXIONA Poland the sponsor of preliminaries to the Technical Olympics of Innovations and Inventions

- p. 14 ● Polkomtel – Warsaw
- p. 16 ● Cultural Centre – Kozenice
- p. 18 ● Sabre Office – Cracow
- p. 20 ● Port Praski – Warsaw

- p. 22 ● Design of lighting and electric installations in Revit application using BIM technology

- p. 24 ● New family of luminaires – Artshape LED
- p. 26 ● Recommended products from LUXIONA Poland offer

Events



Realizations



Technical Knowledge



Products



You are warmly welcome to visit our website www.luxiona.pl/en

Introduction

– Rafal Wesolowski, General Director of LUXIONA Poland



Rafał Wesółowski
the General Director of LUXIONA Poland

Dear All,

With a great pleasure we are handing you over our Jubilee 10th issue of LUXIONA magazine. I believe that also this time you will find something interesting for you. We begin with a broad summary of the 5th edition of summer conferences organized by for domestic and foreign customers of LUXIONA Poland. Traditionally, we would like to introduce you several of our latest and most interesting lighting realizations and in the part of magazine where we offer products we recommend new family of Artshape LED luminaires as well as four other products from our offer. Supplement to our magazine are cutting edge trends in designing with the use of Revit application and BIM technology.

Very important event for LUXIONA Poland this year was subsequent edition of summer conferences. We had pleasure to host several hundred clients. We presented innovative lighting solutions with the use of LUXIONA Poland products and the most modern light control systems. We also presented our most interesting lighting realizations with the indication of applied products as well as a thorough lecture of the designing in BIM technology. The culmination of an intensive training day were your favorite water attractions. They are a connection of adrenaline and relaxation from daily business matters. This time we have placed also opinions of our clients about this year conferences which the best reflect their unique character.

In the part dedicated for our realizations we introduce four examples of buildings which have been enlighten by LUXIONA Poland. The first is a new headquarter of Polkomtel in Warsaw (Mokotow) which is a complex of two buildings connected with glass made junction of identical coloring and harmonic lighting. Special attention should be given to interesting outdoor lighting, skillful connection of decorative luminaires Copacabana made by Metalarte with luminaires X-Line G/K LED in the director's office and unique lighting of spacious entrance hall. In a reception there is a solution called "cloud" designed and made especially for this building. Another example is Cultural Center in Kozenice, building has a glass façade with an impressive representative hall which are illuminated by architectural luminaires Rubin Round. There is also comfortable waiting room which ensures a moment of relaxation. The third presented building is a headquarter of programming center in Cracow of international IT company, Sabre Holdings. It is a modern office building where the main lobby and restaurant we have illuminated with architectural luminaires Perfect Light LED, X-Line and Ring T LED.



Realization: Cultural Centre in Kozenice

The last example is a unique architectural concept of Port Praski in the neighborhood of National Stadium. We have illuminated first of modern apartment buildings in the way which ensures appropriate climate in this place and emphasizes its modern character. Luminaires Kubik L LED, Kubik T LED and Kubik Pole LED brighten outdoor area and other luminaires such as Beryl and Lampas were applied to illuminate buildings, stairs and flower beds.

In the part of LUXIONA magazine dedicated to new products, first of all we wanted to introduce new family of Artshape LED architectural luminaires. Their shapes refer to geometrical figures which allow to create exceptional interior design of high stylistic demands very often in exclusive buildings. At your disposal there are LED luminaires such as Artshape Oval of oval shape, Artshape Three of shape similar to a triangle, Artshape Six of shape referring to a hexagon and Artshape SQ reminding a square. The addition to the part dedicated to our products is the newest version of street luminaire Streetpark New LED of even higher efficiency and luminous efficacy, Tube LED floodlight of highly efficient light sources dedicated to sport halls and industrial buildings, the newest version



Realization: Polkomtel Office Building, Warsaw

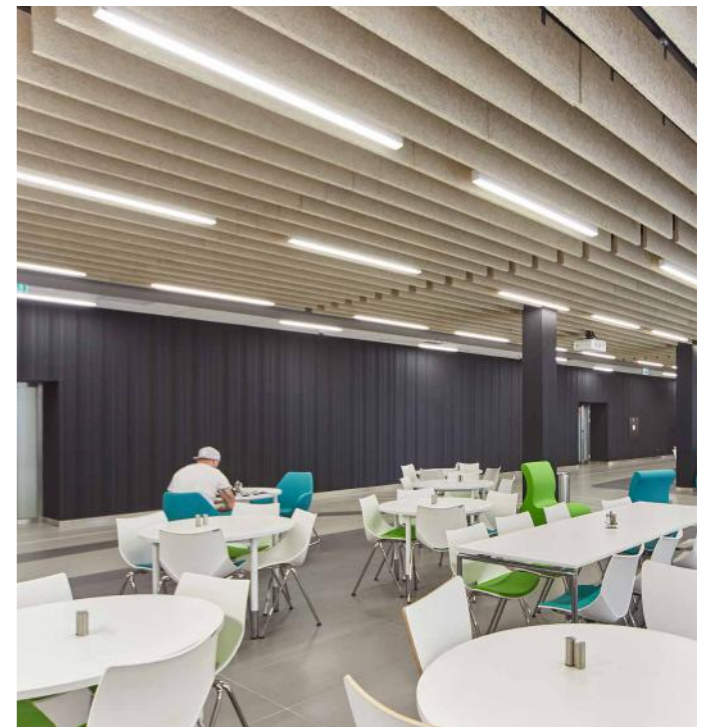
of hermetic luminaire Neptun LED V1 of even higher luminous efficiency and a series of installation facilitators for installers and industrial luminaire Atena LED available in versions with narrow light distribution it is dedicated to work in higher temperature of +55° C or to work in carrying freezers.

The expert's opinion we dedicate this time to the subject of lighting design and electric installations in the Revit software using BIM technology which had a separate presentation during summer conferences. LUXIONA Poland is ready to create projects in this technology and in Revit software. Continuously, we extend the library of luminaire models available in LUXIONA and we encourage everyone who is interested to cooperate with us in this field.

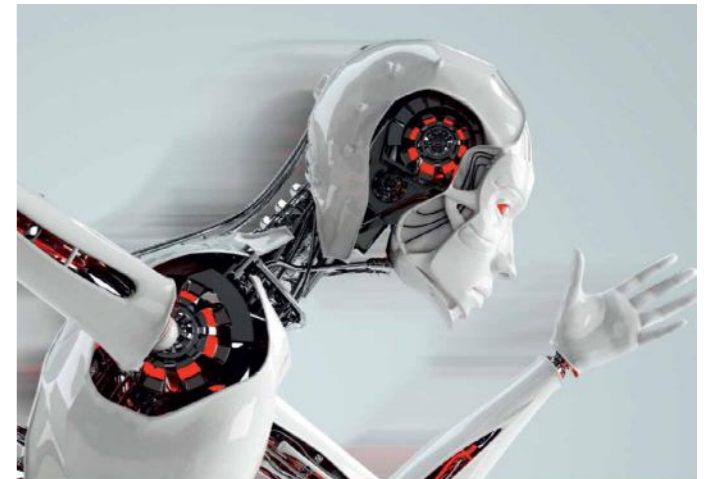
Finally, I would like to share with you an important event for us. LUXIONA Poland had a great pleasure to be one of the sponsors of central preliminaries of the Technical Olympics of Innovations and Inventions. We are proud that we can support development of young, technically talented people. I encourage you to take a look at this and other articles of this issue in order to learn more about interesting details which we want to present to you.



Realization: Port Praski Apartment Building, Warsaw



Realization: Atrium of Sabre Office Building, Cracow



THE TECHNICAL OLYMPICS OF INNOVATIONS AND INVENTIONS

The Technical Olympics of Innovations and Inventions



Summary of Technical Conferences of 2017



- 11 Technical Conferences
- More than 700 Guests: architects, designers of electrical systems, distributors
- More than 300 designs of luminaires
- Presentations of modern lighting control systems

Dear Customers and Partners, we have just finished this year's season of Technical Conferences realized by our company. That was the fifth edition. This time we conducted eleven unique conferences. Traditionally we met in Recreational and Training Centre 'WITYNG' in Mikorzyn. This year's trainings were dedicated to designers, investors, electricians and distributors. Leading topics of the lectures were principles of operation and construction of lighting operation systems and their design in BIM technology using computer software Revit, by Autodesk.



There were also issues concerning LED technology, its dynamic development and many detailed technical aspects which are very characteristic for these currently the most popular light sources. It was a great pleasure for us to be able to lead technical discussions with our Clients and explain concepts connected with the quality of LED technology. We all know that there are plenty of available LED luminaires on the market but awareness of appropriate technical details allows to choose right product.



EVENTS

During this year's conferences we have introduced our Guests about 30 new luminaires models which have appeared quite lately in the offer of our company. We also introduced luminaires which will be implemented on the market in nearest future. Among them there is a series of our newest architectural luminaires of Artshape LED family, they combine of stark technology, aesthetics and simplicity of a form. More information about these products You will find on the following pages of our magazine. An exceptional moment of our lectures was presentation of modern lighting control system which is installed in the conference room where our conference took place. The system was controlling Mosaic LED luminaires which are well known to our Clients. As you know they are based on straight elements and a curve. Combinations of these two elements give unlimited possibilities to interior design. Our meeting were extremely popular which was reflected the record number of guests taking part in one single conference. During one of our conferences in August the number of guests was higher than 100. Meeting during the conferences allowed us to conduct talks with Clients who are present on the market. Together we were looking for answers to burning questions, which are a fundamental in realizing projects together.



The Technical Conferences conducted by LUXIONA Poland is traditionally a skillful combination of professional technical trainings carried out by our best experts with the time intended for active recreation. Water attractions became a permanent event in a schedule of meetings with our Clients. As always they took place under the auspices of General Director of LUXIONA Poland – Rafal Wesolowski and who could share his great passion to water motorsports. Our other employees who are enthused with this passion supported the General Director. Intensive moments of common enjoyment were guaranteed by the Director of Production Plant – Michal Szybalski, the Director of Domestic Sales – Piotr Adamczyk, the Manager of Design Department – Grzegorz Nowakowski as well as sales representatives. The kick of adrenaline was ensured by modern jet skis and powerful, extremely fast motor boats. Day full of technical knowledge and water attractions was surmounted with evening ceremony, supper, fun and special surprise for our Clients. We hope that this year's conferences will remain a sweet memory of our Guests and will create nice memories. We would like to express our thanks for wide participation in this event. We are looking forward to meeting with you in the next season of our meetings. See you next year!





Opinions of our Clients on Technical Conferences

„Participation in the Technical Conferences organized by LUXIONA Poland it is a possibility to get to know modern technologies applied by one of leading companies in lighting industry. Specialized trainings combined with active recreation allow to discover the secrets connected with the producer's offer and to establish contacts with experts which significantly facilitates future cooperation. We kindly thank you for the invitation and the atmosphere supportive spending time together.”

Kornel Borowski, the owner of design office Trydan Kornel Borowski
www.trydan.pl

„On behalf of Apritech team we kindly thank LUXIONA Poland for the invitation to Technical Conference dedicated to issues of designing lighting systems in BIM technology. Thank you for wonderful atmosphere, high standards of the conferences, constructive discussions and time spent together in a nice circle of people. We are highly satisfied with professionalism and creativity of LUXIONA's employees.”

Magdalena Kozłowska, Apritech Project Coordinator
www.apritech.pl

„The Conference organized by LUXIONA Poland is a great combination of product presentation and cool fun. The meetings in a pleasant atmosphere show the participants LUXIONA's flagship luminaires. Presentation is enriched by many technical aspects concerning even if power supply or the newest light sources. It is a perfect supplement knowledge within lighting technology. Second part of the event connected with a fun on the near lake relieves loads of joy. Supper with great music till the morning is a supplement of getting to know other participants of the meetings – designers, representatives of electric warehouses and representatives of general investors. I strongly recommend!”

Tomasz Osewski, the Chairman of the WIBAR GROUP
www.wibar.pl

„I cordially thank LUXIONA Poland for inviting me to the lighting conference. It was really nice to take part in this event. The conference was an ideal opportunity to meet with lighting specialists. The given answers to questions, certainly contributed to increase our knowledge within lighting technology and design. Presented solutions will contribute to implement numerous innovations in our projects concerning light controlling.”

Szymon Nicinski, Project Coordinator in IHOL Company Jan Kubisztal
www.ihol.pl

„This year's conference I will remember because of very professional approach to trainings conducted by staff of LUXIONA Poland. This is an opportunity to get to know new products placed on market. Extremely valuable for me was a chance to exchange my experiences with the constructors and employees of the production plant. The huge kick of adrenaline can't be ignored too during water games and fantastic evening celebrations.”

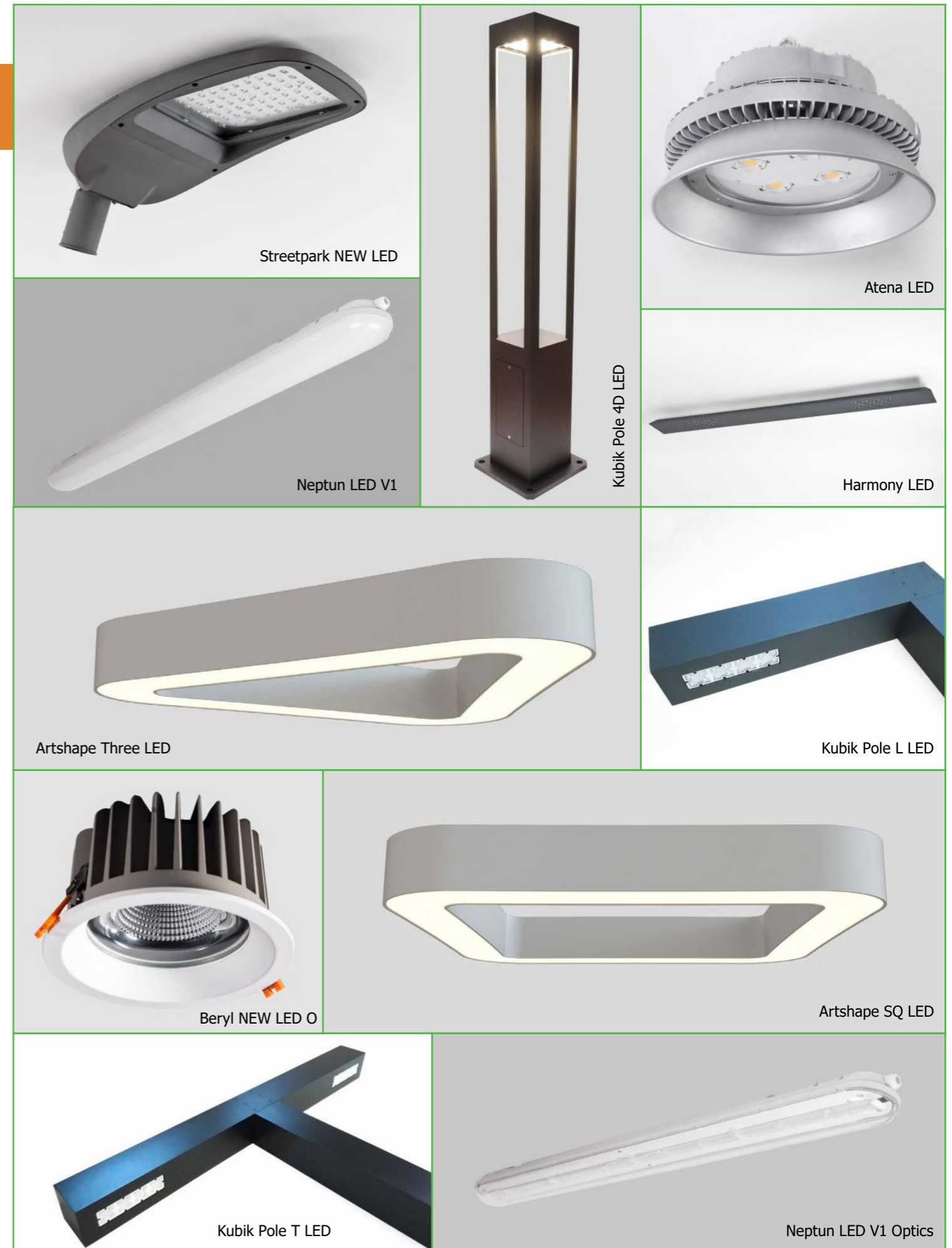
Aleksander Nowakowski, the Chairman of the Unocom
www.unocom.pl

„We kindly thank LUXIONA Poland for invitation to take part in the Technical Conference which took place on 7 – 8 July 2017 in a beautiful recreational centre on the Mikorzyn Lake. In the meeting participated a group of 15 people – members of SEP Cracow and MOIB. The series of lectures was a dose of a quite amount of an expertise and an entertainment part brought lots of unforgettable impressions during time on water. The event was organized on the highest level.”

Stanislaw Lach, the Chairman of the SEP Association Cracow branch
www.sep.krakow.pl

„In hindsight, I think that participation in the conference was a good decision. Thanks to the technical part of training I can say with full responsibility that LUXIONA Poland is a company of professionals for whom the most important is the quality of the products offered to the Clients. On site, each of the participants could learn about the luminaires which are the most popular and about new products. For me, from the point of view of a distributor and an interior designer, important is to learn about the product and to see the product before I recommend it for my Client. The most important in our lives and in a business are people, after the training I had a chance to meet people who make up the company and besides work common passion to water sports chains people together. This was really interesting experience. In my opinion the success of any company is made up of an established team, which gives safe fundament and getting to know each other facilitates for both sides the cooperation after a conference.”

Karolina Gryczan, Interior Designer in Grand&Form Karolina Gryczan
www.grandandform.com



Polkomtel – Warsaw

A new headquarter of Polkomtel company, also called Harmony Konstruktorska, is located in seven storey building, designed by Kurylowicz&Associates architectural studio. It is situated in Mokotow, Warsaw. Its surface accounts for 38 000 m². The investment has been carried out by development company – White Stone Development, which has some characteristic realizations in its portfolio in Warsaw, e.g. apartment building on the corner of Bialy Kamien street and Chodkiewiczza street or Zora Wilanow Estates.

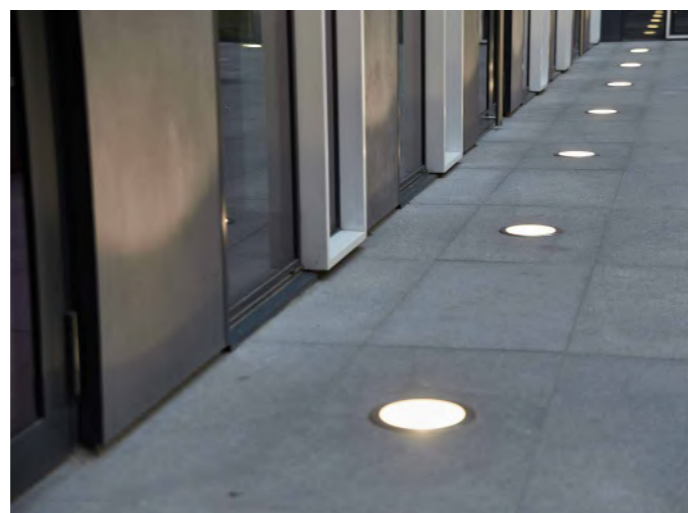
The new headquarter of Plus network operator it's a complex of two buildings connected with a glass passage. They were created in a modernistic style of the consistent color and harmonic lighting. Undeniable asset of the interior is a spacious entrance, behind it reception, halls and corridors.



Applied luminaires: Aria, Troli



Applied luminaires: Fasad Floor LED



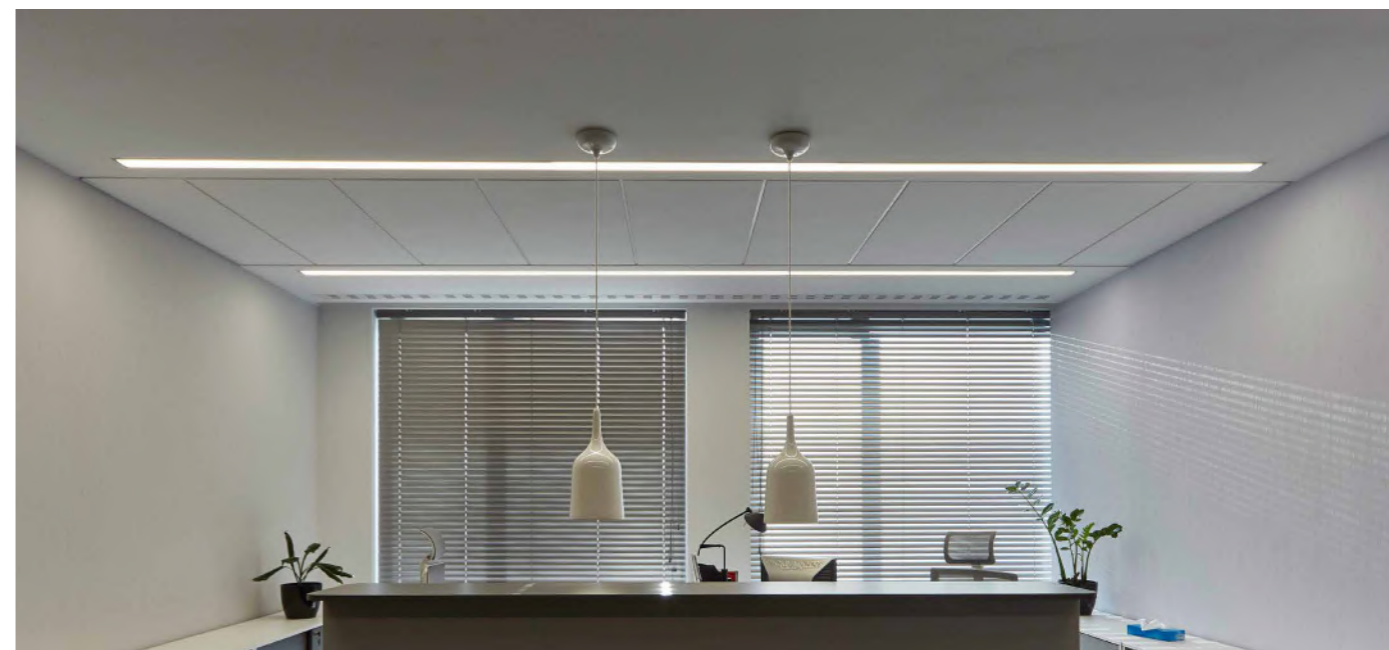
Applied luminaires: Fasad ODL 05



Applied luminaires: Patos O LED, Tear LED, X-Line G/K LED



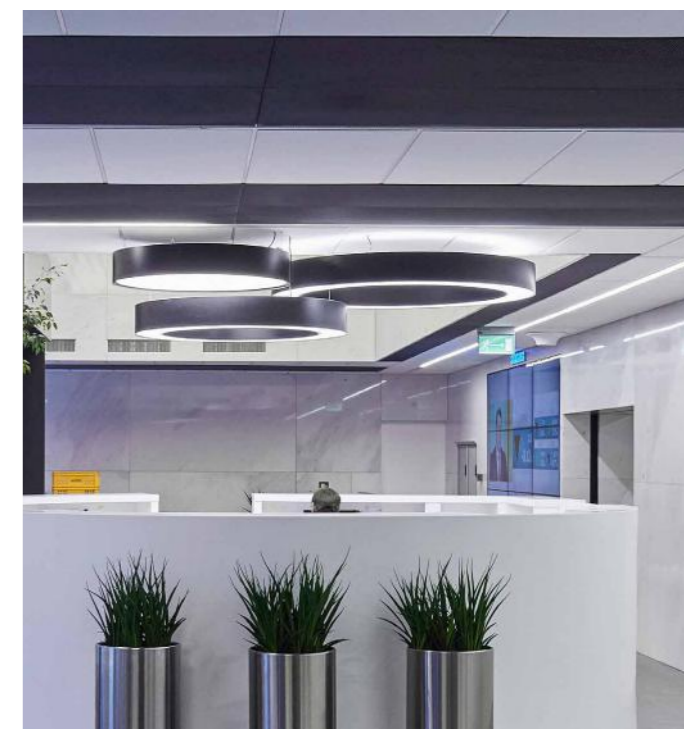
Applied luminaires: Troli



Applied luminaires: Copacabana, X-Line G/K LED



Applied luminaires: Customized product for investment demands



Applied luminaires: Tondo LED

Cultural Centre – Kozienice

The building of the Cultural Centre it's an innovative facility in a small town in Mazowsze region. The façade of the building is completely glazed whilst the interiors of the representative hall, of big space, is illuminated by our architectural lighting fittings. Above a comfortable waiting room there are suspended uminaires of a circle shape. The waiting room has relaxation character – there are numerous armchairs, sofas, racks and computer workstations.

The main asset of the building is a public library and local TV station, placed on the ground floor and two more rooms on the first floor. Inside the library there are audio stations for listening and multimedia film stations. The cinema has large room for 450 people and small room for 100 people. Additionally, on the same floor there is a room for artistic and dancing activities. In this modern centre there is also an art gallery, cafeteria or cinema bar. The top floor is a place for independent music school.



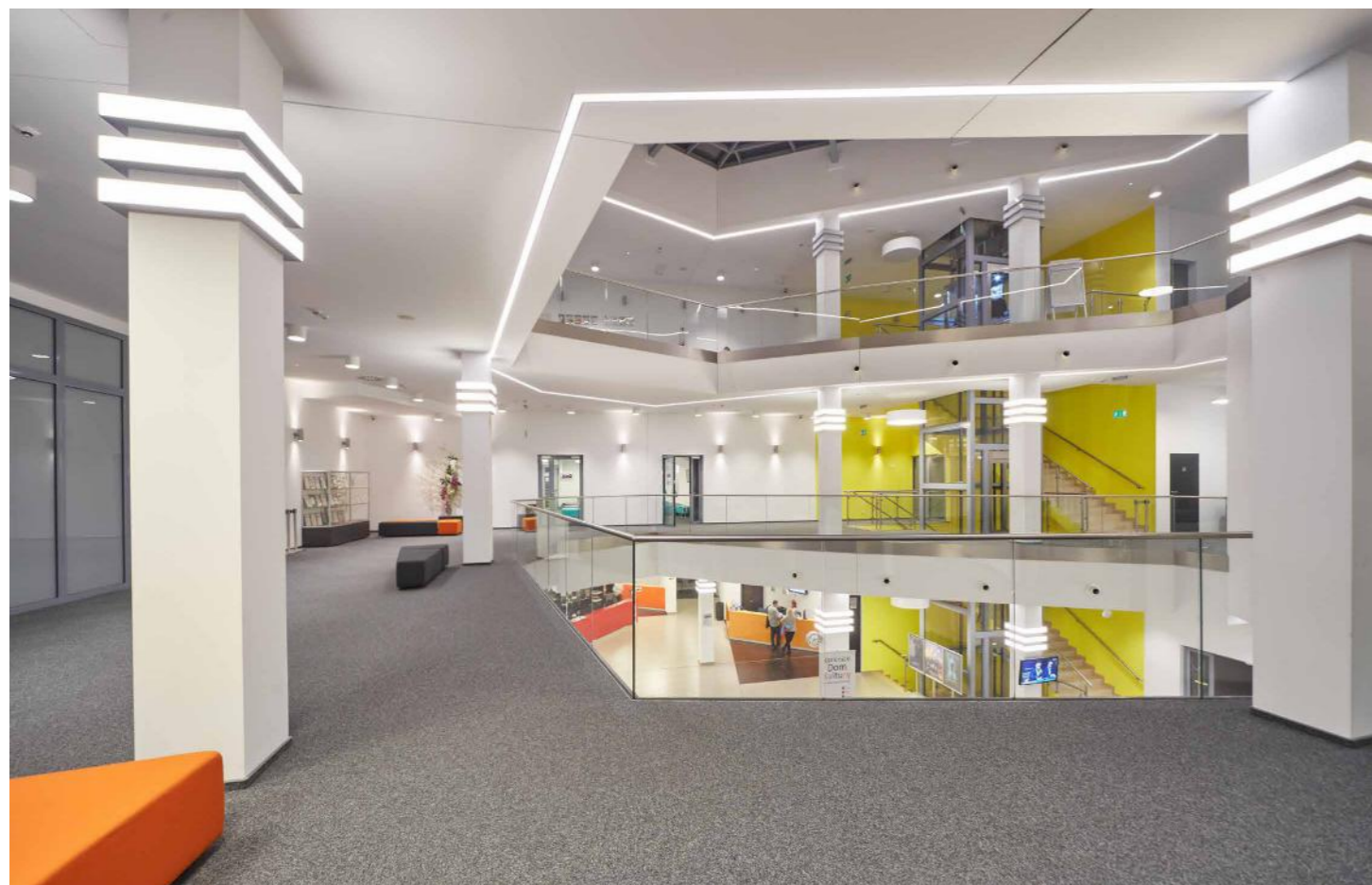
Applied luminaires: Beryl LED O



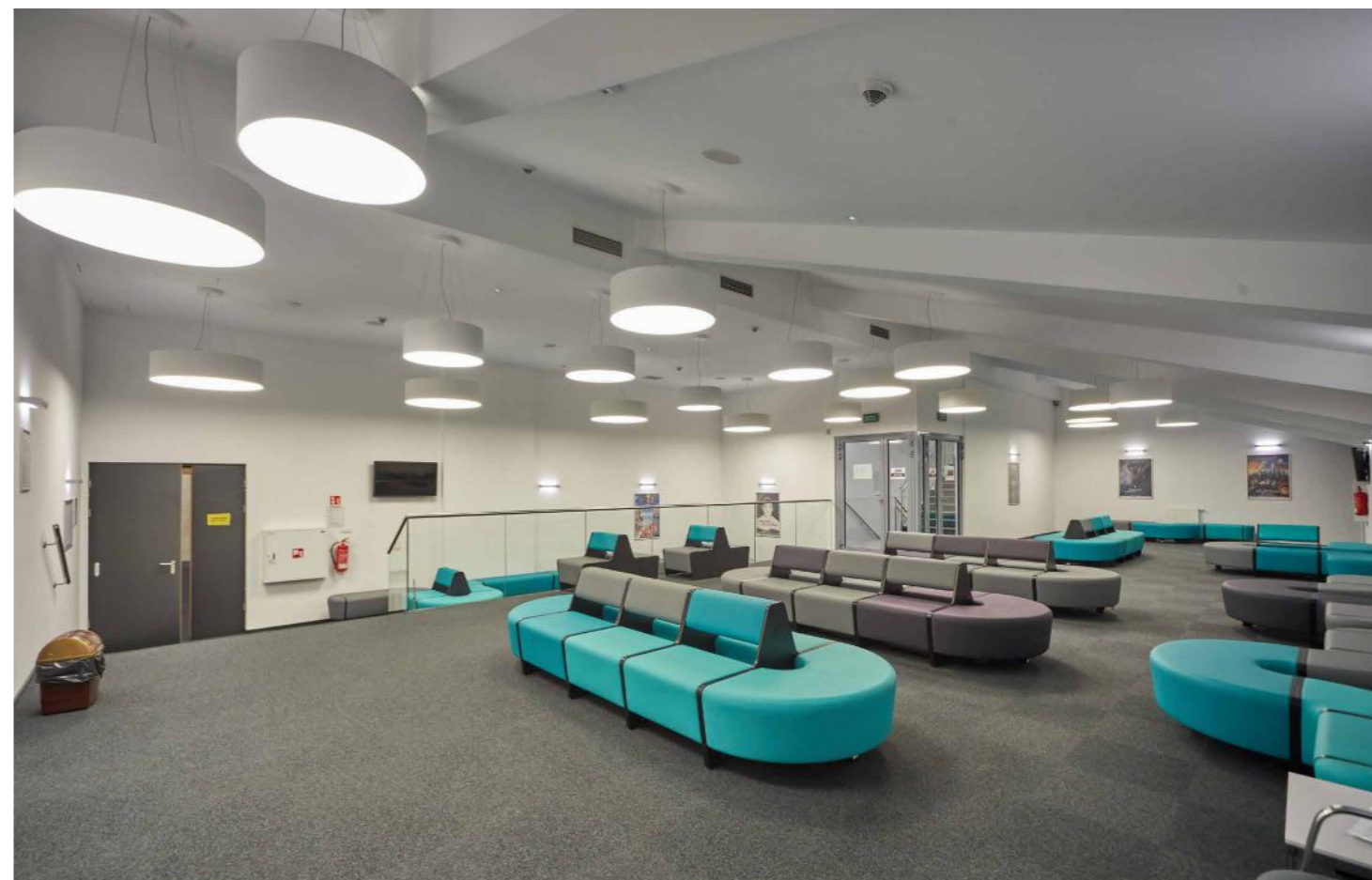
Applied luminaires: Rubin Round, Tear LED



Applied luminaires: X-Line LED, Beryl N LED O



Applied luminaires: Rubin Round, Beryl N LED O



Applied luminaires: Rubin Round

Sabre Office – Cracow



Applied luminaires: X-Line

Sabre Holdings is an international IT company which specializes in creating new software for touristic industry and for airlines. Companies which are a part of the holding offer services for tourists, travel agencies and air carriers worldwide. Thanks to their applications and websites we can book and buy airline tickets, rooms in hotels, excursions and we can rent cars. In Cracow this huge corporation has its programming centre where 300 people are hired. It is their second biggest branch in the world. Its strategy is the acquisition of local talents among the graduates of all colleges in Poland.

The office building where the Sabre Holdings is located is a modern commercial complex of 28 000 m² surface of a high standard of interior finish. All premises are equipped with integrated management system tailored to a lessee. On the presented photos you can see main lobby and restaurant illuminated by architectural luminaires.



Applied luminaires: Perfect Light LED, X-Line



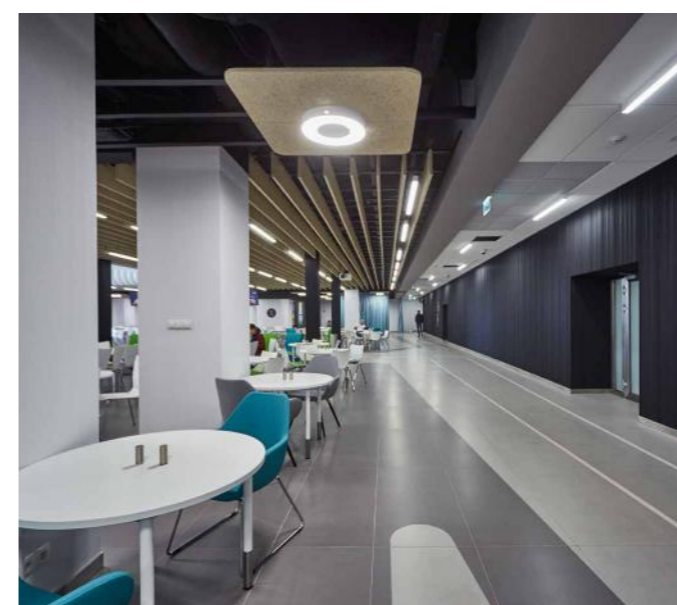
Applied luminaires: Perfect Light LED, X-Line

Perfect Light LED

In this project there we have used a very interesting luminaire – Perfect Light LED. The product is characterized by even illumination surface which perfectly visible thanks to luminaire diffuser. It is useless to look for shadows or glaring points on it, which normally are situated directly under the LED light sources. In this case this effect was achieved thanks special LED modules equipped with lenses their task is to ensure wide light distribution. The requirement of an architect besides, ensuring a perfect light emitted by the luminaire, was a visual aspect. The housing was covered with a lacquer of high gloss it was done thanks to the identical technology that is used in a car industry. The shape of the luminaire, to be precise rounded corners of the body has become a prototype for a new series of architectural luminaires – family of Artshape LED.



Applied luminaires: Perfect Light LED, X-Line



Applied luminaires: Ring T LED, X-Line



Applied luminaires: Ring T LED, X-Line

Port Praski – Warsaw



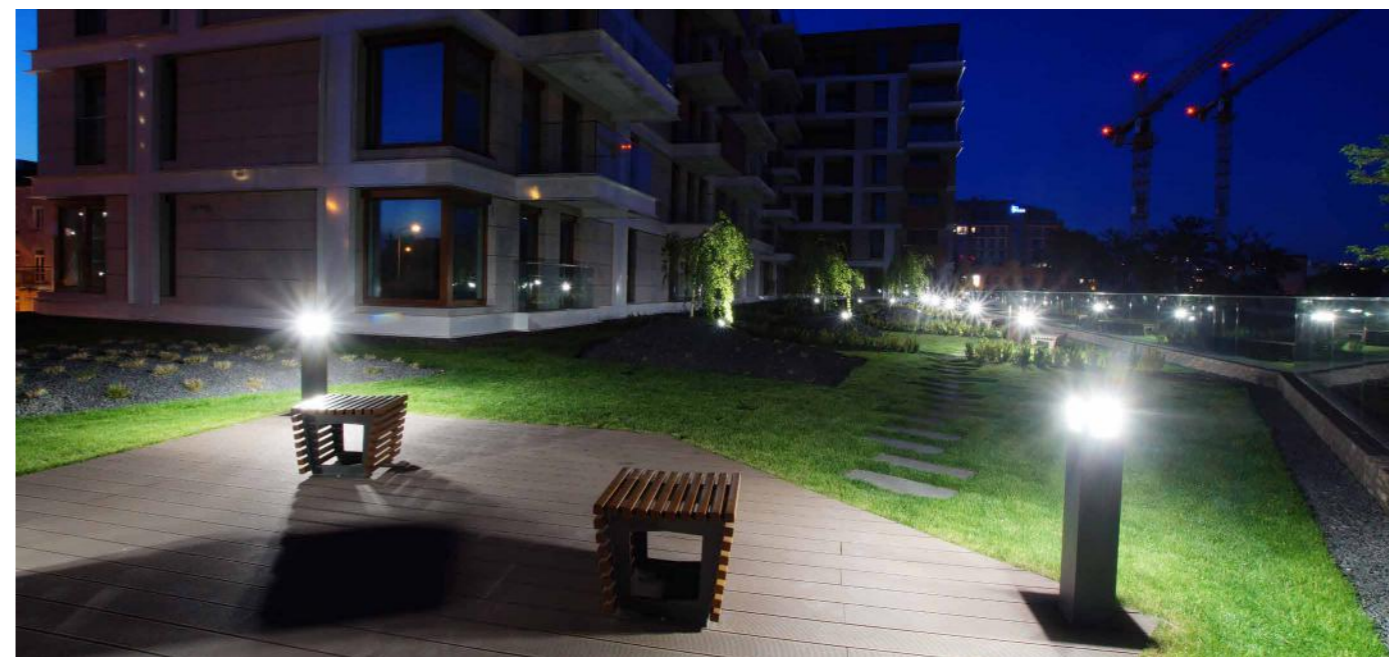
Applied luminaires: Beryl LED N15/220, Beryl KN LED Up&Down IP65

In the city centre of Warsaw, on the right bank of the Vistula River a modern and brave architectural concept is created, it is Port Praski. In the neighborhood of the National Stadium on the abandoned ground of the former port there will grow a small town with comfortable apartments, City business centre, docks and recreation areas. That will be an ideal place for those who love a combination of dynamic city lifestyle and peaceful relaxation in surroundings of water. Astonishing investment covers the area of 40 hectares. In the part called City there will be four skyscrapers of 160 meters high which will provide 200 000 m² of office surface. The realization of such a big investment means that the capital city is more and more open to Vistula River on its both banks. Even though, the major part of the investment

is still just a plan but there are already first modern apartment buildings which were released for use in Old Praga district. Residential quarter refers to historical architecture of this district. Building facades have incorporated the wall of the old screw factory. The estate built in such way must have the lighting which will create the atmosphere and will emphasize its modern character. The surrounding streets are illuminated by our modern LED luminaires – Kubik L LED. On the squares and courtyards our park luminaires – Kubik T LED and Kubik Pole ODB LED were used and many more architectural luminaires for buildings illumination.



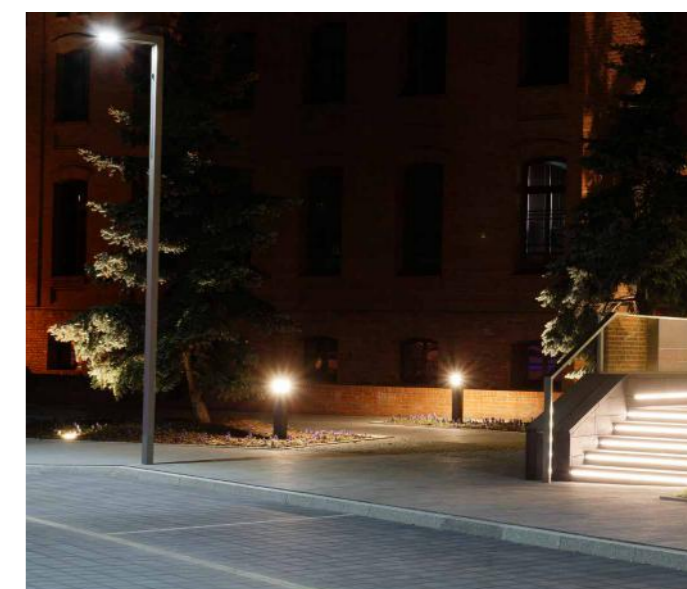
Applied luminaires: Kubik L LED



Applied luminaires: Kubik Pole ODB LED



Applied luminaires: Kubik T LED

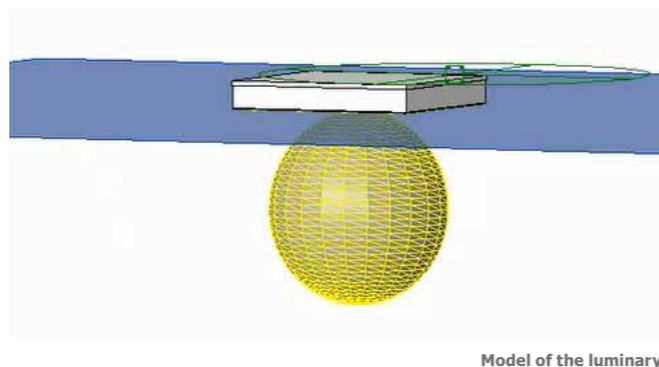


Applied luminaires: Kubik L LED, Kubik Pole ODB LED, Lampas Out LED

Design of lighting and electric installations in Revit application using BIM technology

During this year's Technical Conferences, organized by LUXIONA Poland, we have introduced a very effective method of light designing by applying REVIT program. This application is a representation of a class of programs which use BIM technology (Building Information Modeling). BIM is an innovative technique of designing based on object modeling where information layer of their many properties is assigned to. All the elements used in a project are models of physical objects e.g., walls, finishing elements and equipment or elements of electric installation or sanitary installation.

REVIT program is dedicated for architectural designing but it is enriched with special plug which allows to design lighting. In that the program perfectly copes with doing calculations and visualizations for lighting projects. Lighting designing requires such models of luminaires which become integral parts of a building project. Each model has defined such parameters as dimensions, weight or materials used to build a luminaire etc. Additionally, models include information on necessary features in terms of electric installation, e.g. power, voltage and running current, types of power supplies etc. Electric parameters allow to do the project of electric installation directly in REVIT program. Each type of a luminaire can be represented by many models because every single type includes different information about such elements of a luminaire as LED strips or power suppliers.

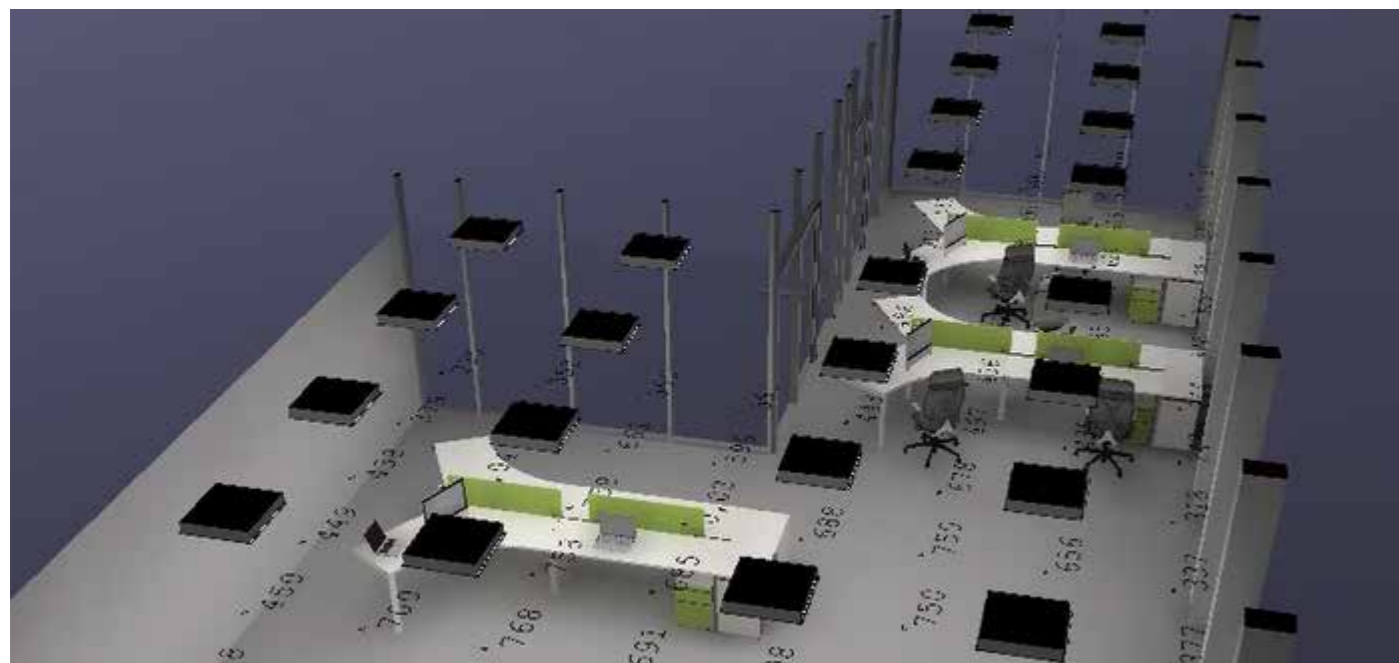


Model of the luminary

For calculating lighting the program uses lighting parameters which are recorded in a model (luminous flux, light distribution angle etc.), and symbolically it is presented as a yellow block 'attached' to physical model of the luminaire. It should be kept in mind that model of luminaires have characteristic, particular and specific parameters. By any manner of means we cannot choose and apply models as we want because we will receive different results.

Below in the photo there are presented results of calculations and visualization of the office room. It was done in the REVIT program by applying models of luminaires made by LUXIONA. We encourage all designers and architects to contact directly with our project office. Our employees with a willingness help You to create electric projects and lighting by using the REVIT program. LUXIONA's models of luminaires are available free of charge on our website:

https://www.luxiona.pl/images/do_pobrania/oprawy%20Luxiona-20170601T192403Z-001.zip



Visualization and calculations results

LUXIONA Poland the sponsor of preliminaries to the Technical Olympics of Innovations and Inventions

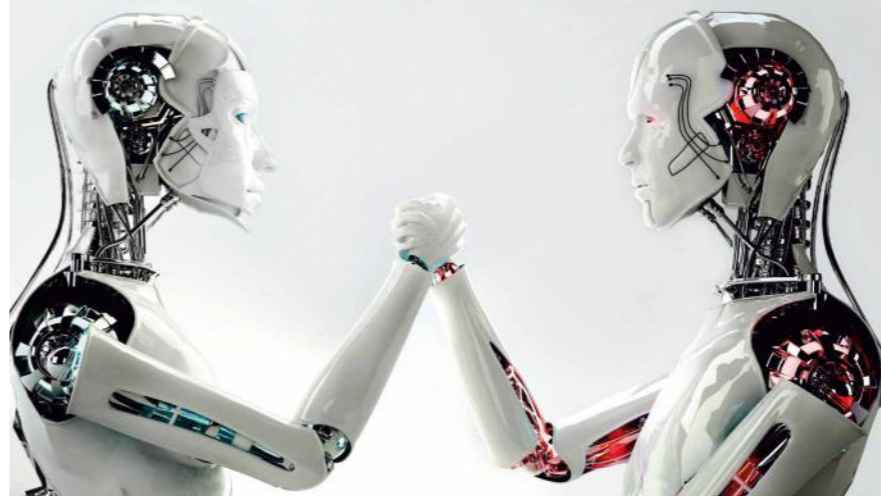
On 2 – 4 of June 2017 in Liceum Ogólnokształcące nr III im. W. Broniewskiego (Secondary School) in Ostrowiec Swietokrzyski were organized preliminaries of the XLIII Olympics of Technical Innovations and Inventions (block B – Inventions). The honorable auspices was under the Governor of the Ostrowiec District – Zbigniew Duda. Other patrons of this initiative were: the Governor of Swietokrzyskie Province – Agata Wojtysek and the Superintendent of Swietokrzyskie Education Supervision Office – Kazimierz Mądzik. The partners of this festival were also rectors of academic schools – the Maria Skłodowska-Curie University in Lublin, the Technical University in Kielce and the College of Business and Enterprise in Ostrowiec Swietokrzyski.



Provincial Center for Technology and Innovation in Kielce

THE OLYMPICS OF TECHNICAL INNOVATIONS AND INVENTIONS XLIII EDITION - BLOCK B - INNOVATION

National Final 2-6 of June 2017
LO nr III (Secondary School)
in Ostrowiec Swietokrzyski



LUXIONA Poland had pleasure to be one of the sponsors which supported this event financially. The Olympics of Technical Inventions and Innovations itself is intended for students of secondary schools who compete for the title of the 'Young Innovator'. This event has been organized annually for 47 year by Polish Association of Inventors and Innovators under the auspices of Ministry of Education. This year the honorable patronage has been taken by European Commission by its representation in Poland. The Olympics gathers young technical intelligence from all over Poland. Laureates and finalists receive student book, without recruitment procedures, to all technical colleges in our country and some universities e.g., Jagiellonian University in Cracow. The Olympics is on the list of subject Olympics in the nationwide ranking of schools which is organized yearly by magazine 'Perspektywy' and that makes the event prestigious and media.



New family of luminaires – Artshape LED

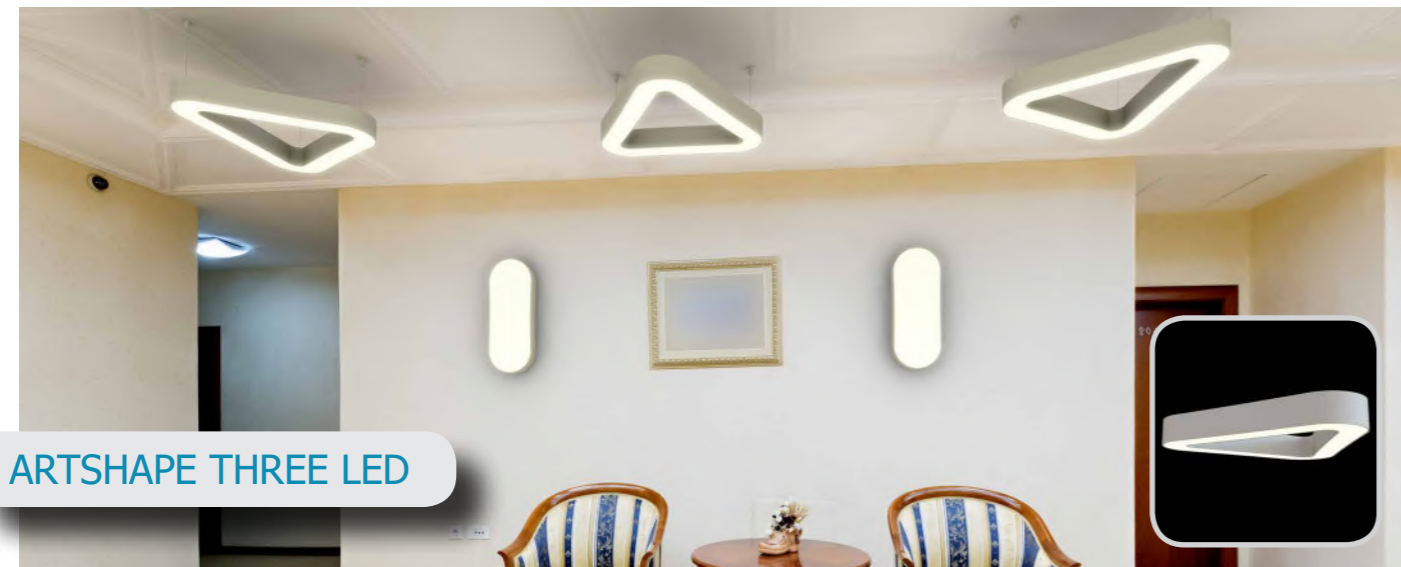
With the pleasure we present You our newest family of products – Artshape LED. It consists of modernistic architectural luminaires referring to the shapes of popular geometrical figures. The products are distinguished by stylish design and simple form. The luminaires are adapted to be surface mounted or suspended. They are equipped with highly efficient LED light sources. Available color temperature of light is 3000 K or 4000 K. The sides of the shade are made of aluminum profile. In combination with possibility to painting according to RAL, luminaires allow to create a unique arrangement of various premises. Perfectly light – emitting, even surface is made of material which has a good light transmittance factor as well as good parameters of light distribution. The luminaires are dedicated for interiors of high stylistic standards such as hotel atriums, office receptions, architectural studios, conference rooms or halls and corridors in exclusive buildings. They can be applied also in the cinemas, theaters or modern shops and shopping centers.



ARTSHAPE OVAL LED

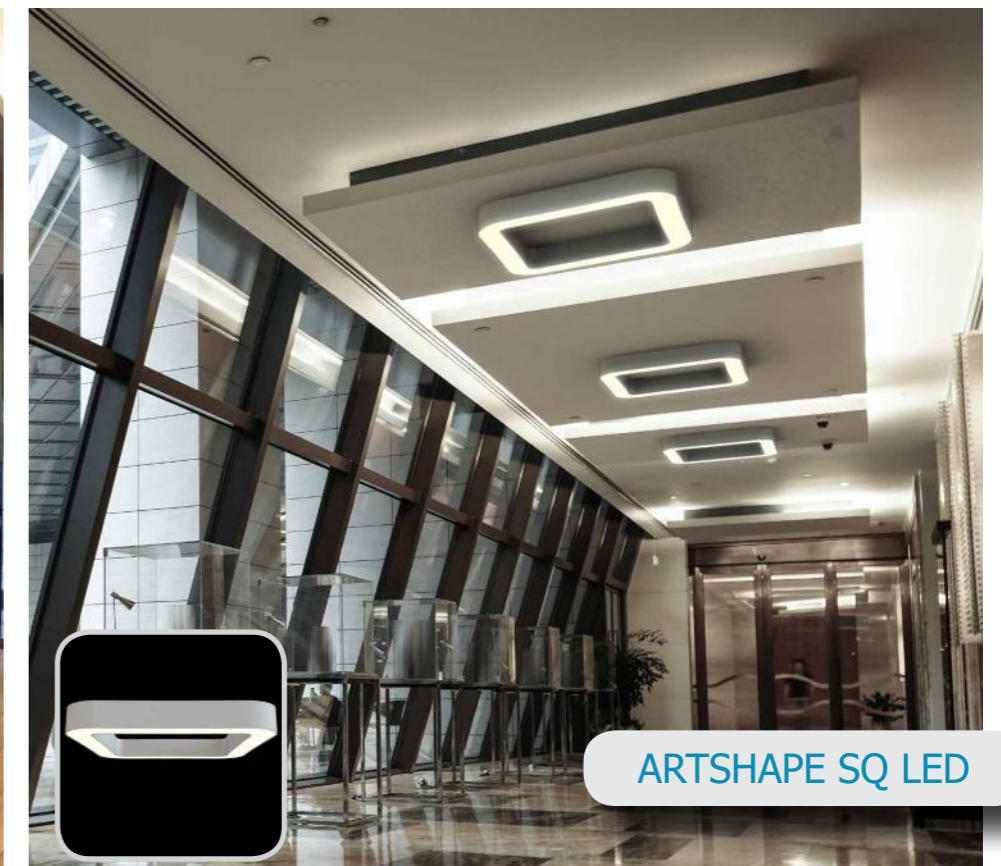
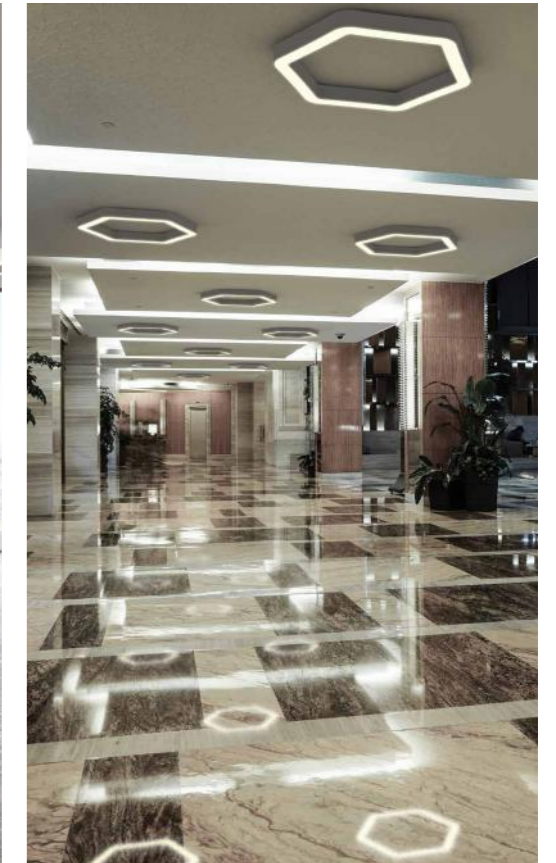


ARTSHAPE SIX LED



ARTSHAPE THREE LED

New family of luminaires – Artshape LED



ARTSHAPE SQ LED

Recommended products from LUXIONA Poland offer



**STREETPARK
NEW LED**

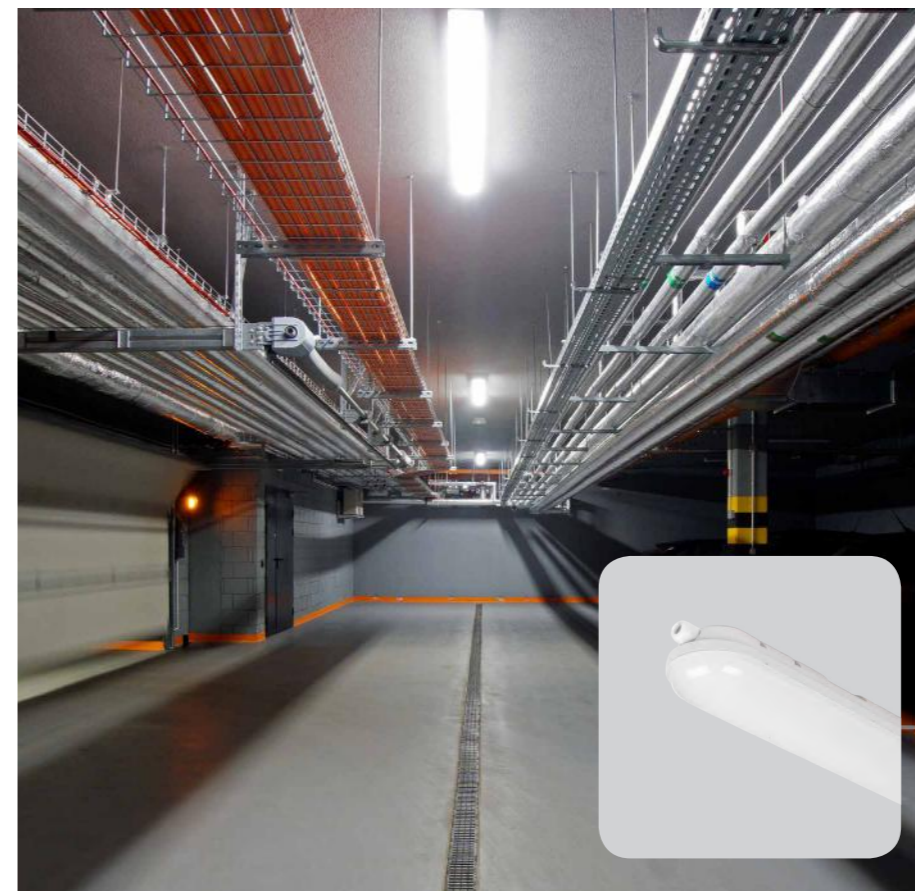
This is the successor of Streetpark LED it differs from the predecessor of higher light efficiency and better luminous efficacy. It was achieved thanks to the application of more efficient and more energy saving LED modules and thanks to modern optics based on the lenses. The luminaire is available in six options in terms of optical system. Indisputable asset of the new product comparing with the predecessor is more modern design. New housing of the luminaire was made of aluminum cast. The luminaires is equipped with adjustable handle dedicated for mounting on posts and extension arms of the diameter Ø 60 mm. The level of tightness is IP65. Shock proof level for this luminaire is IK09. The diffuser is made of hardened glass. Color temperature of LED light sources is 5000 K. Color rendering index for this luminaire is Ra>70. The luminaire is available in two versions: Premium or Standard. The Premium version is available with five different optical systems. The Premium version has ENEC certificate.



TUBE LED

Modern, industrial luminaire equipped with highly efficient LED light sources of renowned producers. The housing of the luminaire is made of aluminum in black color. The diffuser made of transparent and hardened glass. The product characteristics: high quality finish, aesthetic design, energy saving and highly efficient. In view of long lifespan of light sources and their maintenance – free exploitation, the luminaire can be successfully mounted in hard-to-access places, e.g. high altitudes. Power supply 230 V. The level of tightness – IP65. The level of shockproof – IK08. Mounting on the adjustable handle. There are three available versions of LED value of luminous flux: 5400 lm, 10800 lm or 15000 lm. The color temperature is 5000 K. The color rendering index is Ra>70. Application: production halls, warehouses, sport facilities, car parks, facades and industrial buildings.

Recommended products from LUXIONA Poland offer



NEPTUN LED V1

This luminaire is the successor of the Neptun LED. Neptun LED V1 is characterized by higher luminous efficacy comparing with its predecessor. It was achieved thanks to applying newer and more efficient LED modules. The new version of the luminaire is a facilitation for installers. The product allows quick connection of power supply without the need of disassembling the shade and simple pass – through connection. Metal clips which connected housing with shade were abandoned in the new version which gives more compact look of the luminaire. The luminaire is available with opalized or transparent shade made of polycarbonate. The optical system in the form of transparent shade can be in connection with lenses (Optics version), which provide three different versions of light distribution. The level of tightness is IP65. The level of shockproof is IK10. The color temperature of applied LED light sources is 3000 K or 4000 K. The color rendering index is Ra>80. Application: halls, warehouses, underground passages, car parks etc.



ATENA LED

This is the industrial suspended luminaire with LED light sources included. The body is made from aluminum cast which at the same time plays role of a radiator for LED modules that are placed inside. The body is powder coated in grey. The luminaire is highly resistant to dust and water penetration – IP65. The level of shockproof is IK10. The color temperature of applied LED light sources is 4000 K or 5000 K. The color rendering index is Ra>70 or Ra>80. Application: factory halls, warehouses etc. The products is also available with optical system which gives a narrow light distribution (type NARROW) – it can be applied in high - storage warehouses. Other versions of this luminaire are Atena LED Industry (the product is equipped with components adjusted to work in the surrounding of up to +55° C) and Atena LED Polar (can be applied in cold chambers).

LUXIONA



OFFICE OF THE MANAGEMENT BOARD / TRADE OFFICE:

LUXIONA Poland S.A. Macierzysz near Warsaw
ul. Sochaczewska 110, 05-850 Ozarow Mazowiecki
sekretariat@luxiona.com

www.luxiona.pl
www.luxiona.com

EXPORT DEPARTMENT:

UK Business Development Manager
+44 (0) 757 034 2028
export@luxiona.com

UK, IR
+ 48 600 987 439
export@luxiona.com

BE, FR, LU
+ 48 600 967 210
export@luxiona.com

DE, AT, CH, LI
+ 49 641 48010831
info@luxiona.de

SE, NO, DK, IS, FI, NL
+ 48 505 695 581
export@luxiona.com
nordic@luxiona.com

RU, BY, UA, MD, GE, AM, AZ, KZ,
KG, UZ, TM, TJ
export@luxiona.com
east@luxiona.com

LT, LV, EE
+ 370 650 22 522
export@luxiona.com

SK, CZ, RO, BG, SRB, HR, HU, BiH,
MNE, MK, XK, AL
+48 505 695 568
export@luxiona.com

SLO
+ 48 505 695 575
export@luxiona.com

DESIGN DEPARTMENT:

+ 48 22 721 72 29
+ 48 600 460 144
projektanci@luxiona.com

LUXIONA Poland is part of the Spanish LUXIONA Group, which for more than 80 years has been successfully operating on the international market of the lighting industry. The mission of LUXIONA Poland is to create complementary lighting solutions, in accordance with the most recent technologies as well as legal and social requirements. For that reason, an active team constantly works on innovative technical solutions, keeping in mind the need for saving energy and protecting the environment. The team does not cease to enhance the quality of our products and the efficiency of our services, permanently analyzing the needs of our Customers.

The LUXIONA Group, including LUXIONA Poland which continues to implement the Group strategy, specializes in the composition and creation of indoor and outdoor lighting systems, basing on the vast experts' experience and the broad scope of product brands. An integral part in the offer of LUXIONA Poland are comprehensive lighting solutions, which cover both the production and design services, in the widest sense of the word, delivered by high class designers and ready to meet the requirements of, among others: architectural spaces, areas in the so-called clean rooms, commercial surfaces etc. The LUXIONA Poland team specializes in implementing projects which require an individual approach and the application of modern technologies.

troll

metalarte

Sagelux