

LUXIONA

LUXIONA Poland magazine

CONFERENCES

REFERENCES

NOVELTIES

PRODUCTS

magazine no 12

troll

metalarte

Sagelux

LUXIONA POLAND AN OFFICIAL PARTNER OF



ASSOCIATION OF POLISH ARCHITECTS



Dear Readers

The last quarter of the year is traditionally time to publish following issue of our magazine. This time, with a great pleasure, we would like to present the 12th edition of our magazine. We encourage you to familiarise yourself with the proceedings of this year conferences, which were even richer with knowledge of lighting and numerous attractions. We went to great lengths in order to entertain our clients as best as we could.

Overwhelmingly positive comments coming from the readers of 11th issue of LUXIONA Poland magazine, caused that we would like to enthuse you over our lighting realisations from different segments of the market. We invite you to overview the newest interior and exterior architectural projects.

The theme of this year conferences was Human Centric Lighting. It is an issue that cannot be disregarded by LUXIONA. We recommend you to read our magazine and specially dedicated brochure in order to gain an insight into this issue.

Have a nice reading!

Editors of LUXIONA magazine

TABLE OF CONTENTS

Rafał Wesolowski – General Director of LUXIONA Poland S.A. p. 4

Conferences

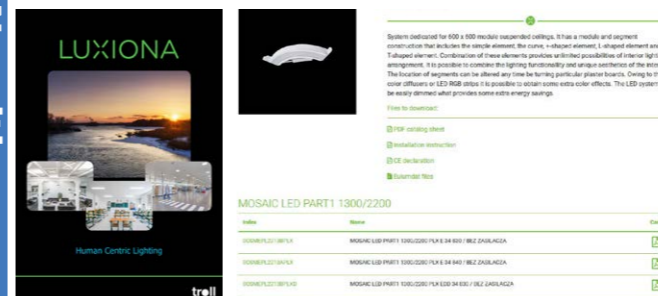
Summary of the Summer Technical Conferences of 2019 p. 6
 Water attractions p. 10
 Evening entertainment p. 12



Supermoto p. 14

Novelties

HCL brochure p. 48
 New website of product offer on luxiona.pl p. 49
 Application of colour LED diodes in breeding and cultivations ... p. 51



References



Jagiellonia Bialystok - training centre p. 16
 OLX Berlin p. 18
 ADO p. 19
 The auditorium of the Institute of Physics in UMK Medical University in Łódź p. 20
 Non-invasive Medicine Center in Gdańsk p. 24
 Babyiss Paris p. 26
 Alior Bank p. 28
 Unitherm p. 30
 Relaxation zone in shopping centre, Łódź p. 31
 Nitrogen Fertilizer Factory in Pulawy p. 32
 Riding hall in Boleslawow p. 34
 Slaughter & processing plant p. 35
 Military Replenishment Council p. 36
 Elclim p. 37
 „Osiedle na Woli” estate p. 38
 Kadzielnia Reserve p. 40
 „Port Praski” estate p. 42
 Energa Stadium p. 44
 Mentor S.A. p. 45
 Hybrid operating room p. 46
 Dr Irena Eris p. 47

Products



Double Sphere LED p. 52
 Beryl New LED K/ Beryl N New LED K p. 52
 Kubik Pole L/T LED p. 53
 Mosaic L, T, X LED p. 53
 X-Line Slim LED p. 54
 Streetpark S LED / M LED p. 54
 Europanel Circle LED p. 55
 Pareo New LED p. 55

RAFAŁ WESOŁOWSKI – GENERAL DIRECTOR OF LUXIONA POLAND S.A.



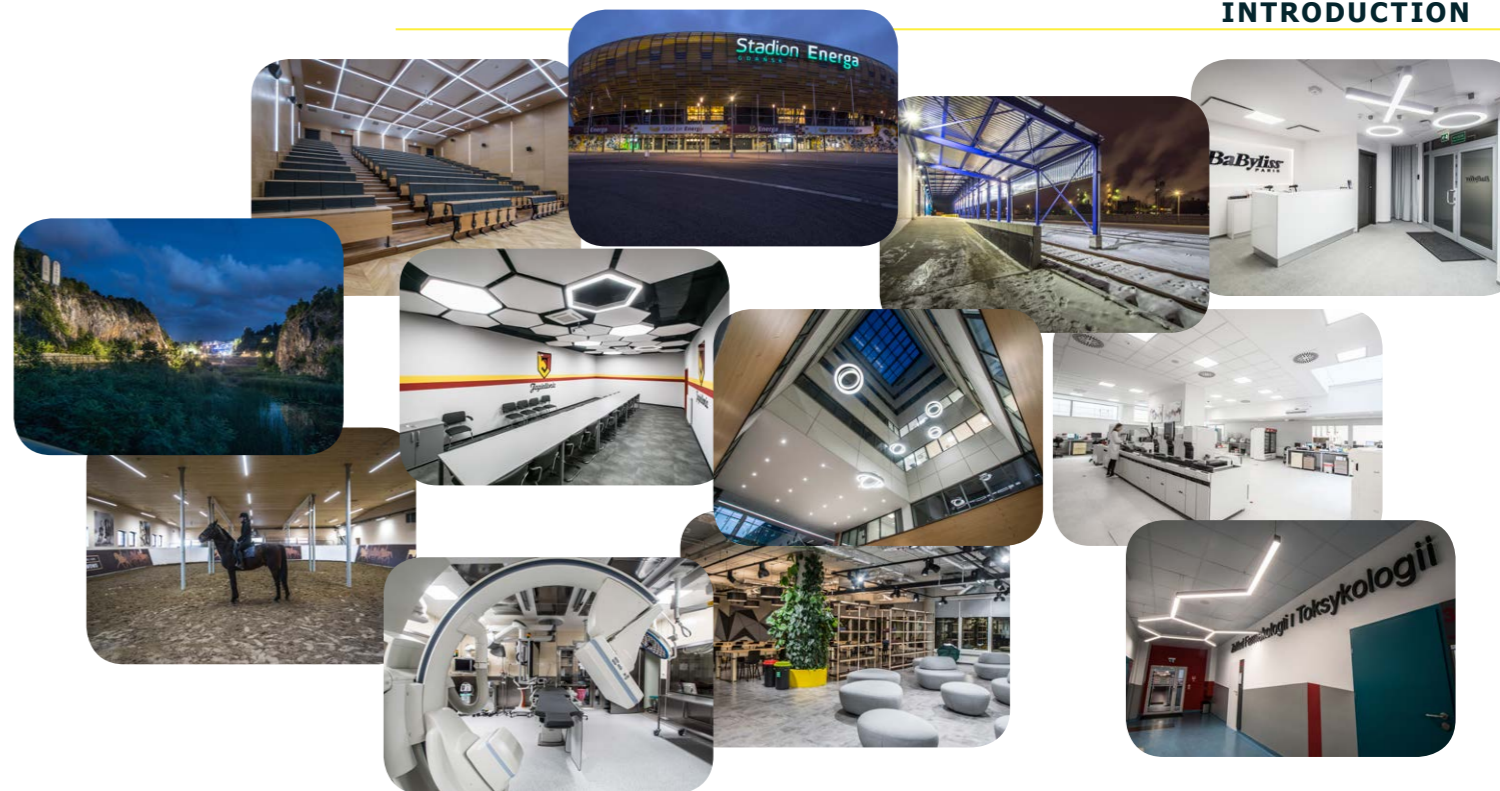
Dear All,

I am extremely pleased we can again present you consecutive edition of our magazine. We are summarising 7th season of summer technical conferences, organized for LUXIONA clients. You will find here a unique coverage from this year meetings with our clients, as well as, the newest portfolio of the most interesting buildings, which we have had a chance to illuminate with recently. We also share our knowledge concerning new trends in lighting, with particular reference to Human Centric Lighting. I encourage you to familiarise yourself and take advantage of our new marketing materials and innovative lighting solutions.

This year technical conferences were characterized by HCL, that is Human Centric Lighting, which was leading theme of all seminars for particular groups of our clients. The unique lecture given by Michał Szybalski, Director of our production plant, will be remembered for long time by listeners.

The perfect complement of this lecture was elaboration of how to utilize luminaires to function in specific conditions by Grzegorz Nowakowski, Manager of the Design Department. The most interesting examples of the most recent realisations were presented in exceptional way by Paweł Prus, Manager of the Marketing Department. Separate part of the conferences were product workshops, which were a kind of overview of our lighting solutions. We present full offer for office buildings, industrial buildings, residential buildings, clean luminaires and external architectural lighting. Quality assurance of luminaires produced and offered by LUXIONA Poland and its significant importance in practice was introduced in an original manner was introduced by Grzegorz Grudzien, Manager of the Construction Department. Clients in place could see the value of our products which have to undergo demanding tests in laboratories. Traditionally, after full day of conferences there were water attraction awaiting for our clients and evenings were fulfilled with memorable light illuminations.

Significant part of our magazine is devoted to our most interesting realisation in this year. They are grouped according to illuminated buildings and applied lighting solutions. The first group of shown realisations we intentionally called Office and Architecture, for together with architects we are trying to give unique and unrepeatabe character the rooms which are illuminated. An interesting example are premises of training centre of Jagiellonia Białystok, where our luminaires ARTSHAPE SIX LED are incorporated in suspended ceiling made of hexagonal plates. Other of our realisations is auditorium of Institute of Physics UMK in Torun, which received a prize „Building of the Year” in category „modernized and adapted buildings” in the contest organized by Mayor of Torun. In the corridors of the Institute of Pharmacology and Toxicology of Medical Univeristy in Lodz we applied connection of architectural luminaires SNAKE V and W with luminaires X-LINE, thanks to this we achieved shapes referring to the structures of proteins. A unique example of our customized light solutions is a spatial composition of pendant spherical luminaires DOUBLE SPHERE LED specially designed for the Centre of Non-invasive Medicine in University Clinical Centre in Gdansk. The same luminaires can be found in the employees training centre of ADO company, which is located in Berlin. We are observing that increasing number of designer’s architectural luminaires are represent in it would seem ordinary smaller or bigger office rooms, customer service centres, waiting rooms, canteens or relaxation zones. Good example of these applications are ARTSHAPE X and ROUND luminaires in Warsaw office of well known producer of hairdressing utensils-BaByliss Paris or SNAKE LED customized luminaires in relaxation zone of Port Shopping Centre in Lodz.



Exceptional effects by creating climatic interior using suitable lighting was achieved in relaxation rooms in the Warsaw office building of Alior Bank, where we applied LEWIT T, TYTAN SOPEL LED and TEAR LED luminaires. The ARTSHAPE luminaires look extremely interesting is in Berlin offices of OLX company.

Very often we apply our luminaires to illuminate industrial buildings or sport facilities trying to make this kind of space, often requiring customized products to work in specific conditions, be eye-pleasing. In Zakłady Azotowe in Pulawy, one of the largest nitrogen fertilizers plant in the world, we have applied TUBE LED and NEPTUN LED V1 luminaires adapted to work in the toughest chemical conditions. Another example is Processing Plant and Poultry Slaughterhouse in Radom, this building required specialistic lighting thus we applied RUBIN CLEAN INOX luminaires made of stainless steel also equipped with diodes emitting blue light. An interesting sport and leisure centre facility is Horse Riding Hall in Bolesławów, Kashub region, where our UNIVERSAL LINE LED and NEPTUN LED V1 luminaires were used. These luminaires are hermetic and high temperature changes proof. As in previous years, so the same this year we have had interesting realisations of residential buildings. The outer areas of Na Woli Housing Estate we have illuminated with TOSCA LED and STREETPARK LED luminaires and colourful corridors inside buildings are illuminated with linear X-LINE LED and square X-LINE SQ N LED. Another example are illuminations of buildings facades are KUBIK LED and outside space KUBIK POLE ODB LED in modern housing estate Port Praski in Warsaw as well as reception and interior corridors illuminated with TYTAN SOPEL LED, X-LINE SLIM LED, KUBIK KN LED UP&DOWN and BERYL NEW LED O.

At the end of the outside lighting review I would like to present our two very prestigious realisations. The first is the main entrance of Energa Stadium in Gdansk, illuminated with almost 200 KUBIK CEILING LED luminaires. The second, however is completely different project, it is Kadzielnia Park-Reserve in Kielce-unrepeatabe example of landscape illumination like from a fairy-tale. Actually it is hard to say whether this place looks more attractive in a day or at night. I leave for every one to decide on their own. Outer areas of Park-reserve we have illuminated with SPARTA LED, PAREO LED and STREETPARK LED luminaires and in the caves we have applied KUBIK LED and ROLLER LED luminaires.

Traditionally in the review of our realisations we cannot fail to present clean rooms. This time particularly it is worthy of noticing a prestigious hybrid room in Regional Specialist Hospital in Olsztyn, where AGAT CLEAN LED luminaires are applied and which ensure natural white light of high CRI>95 index with possibility of green light emission. An instance of different application in clean rooms is cosmetic company Dr Irena Eris from Piaseczno, whose laboratories and production plant is illuminated with AGAT CLEAN, AGAT CLEAN SLIGHT LED and RUBIN CLEAN CORNER LED.

Present edition of LUXIONA magazine is completed with two more sections: Novelties and Products. In the first we are inviting you to get familiar with new brochure Human Centric Lighting, issued especially for summer technical conferences. The brochure is available to download from our website, where you can also find the list of turnable white products. In this section we more widely discussed the usage of specialistic diodes in the colour of your choice in breeding and plant cultivation. Moreover, on our website we have launched new product offer, a marketing tool of increased functionality. In the part dedicated for products we present few recommended products-addition of ARTSHAPE family with spherical luminaire for spacial applications DOUBLE SPHERE LED and development of MOSAIC family with new shapes L, T and X. BERYL family we are broadening by square equivalents of round luminaires. To X-LINE family we are adding SLIM version of reduced dimensions. The EUROPANEL we are completing with a version with grille of round shape which means EUROPANEL CIRCLE LED. Offer of external luminaires is broaden by KUBIK POLE L/T LED of 6m height and new STREETPARK M LED/S and park and garden PAREO NEW LED luminaire.

SUMMARY OF THE SUMMER TECHNICAL CONFERENCES OF 2019

The Summer Technical conferences in 2019 were the seventh in the row series of meeting with our steady and new clients. We encourage you to read a short coverage, where you will find out how our conferences went this year and what we brought to perfection in the method of presenting our company.



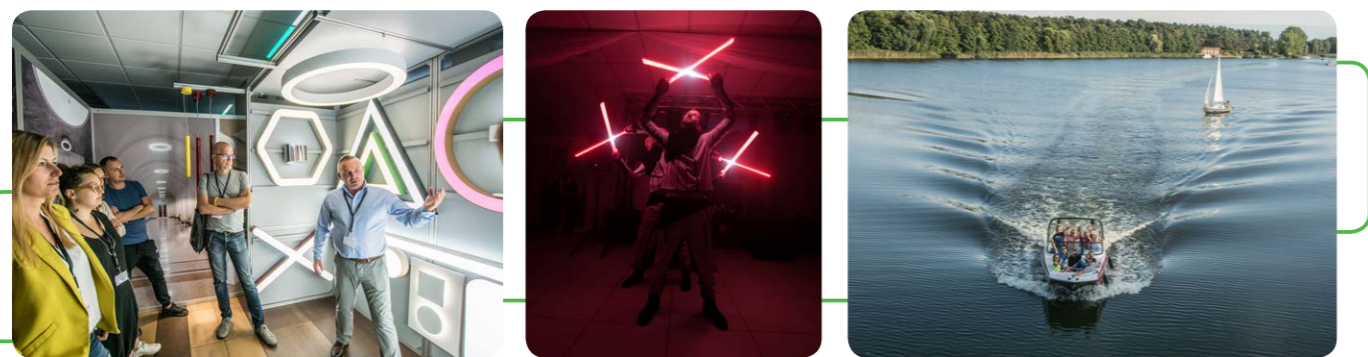
Traditionally the venue of our conferences was Leisure and Training Centre Wityng in Mikorzyn, in the neighbourhood of picturesque area by Mikorzynskie Lake. Once more we hosted few hundred clients from Poland and also a dozen or so from export markets, among them many architects, investors, electricity contractors, designers of electric installations and lighting, distributors and for the first time interior architects. As it can be seen our target group, to which we are trying to reach, is constantly growing. As every year, we did our best to pleasantly surprise our clients, who decided to take part in one of the most popular events in lighting industry in Poland.



Tested last year a „tradefair” form of our products stands this time round was very popular among guests. We focused on the most popular lighting market sectors: offices, architectural lighting, industry, clean rooms and external lighting. We added a new technical stand, where clients could find out specific and relevant information concerning LED technology and methods of ensuring the best working conditions for diodes placed in our luminaires.

Except for few novelties, each of our product stands presented not only our flagship and popular products but also their new possibilities. As an example we can present architectural luminaires stand. Predominantly we presented there our flagship products along with ARTSHAPE family. This year we have launched not only new shapes but the stand emanated with colours which caused a sensation among visitors. It is not only about refined housing colours but also colourful leds. We used RGB technology, turnable white and up&down method of light distribution in these luminaires. Everyone using dedicated remote control have some fun with light. In the case of architectural luminaires colour the task for colour diodes was to extract even more effective and aesthetic qualities. Application of particular colour of light in industry or in clean rooms has specific targets so it changed our luminaires to specialized and oriented products for particular environmental conditions. Such products clients could not only see but also learn about their application.

Speaking of knowledge, we would like draw closer a bit to what was happening on technical stand which was mentioned earlier. Our leading employees from construction departments explained with an example of led straps, infrared camera and short experiments how diodes behave in different conditions and what is essential to ensure the most optimal working conditions. They also told how our modules stack up against our competitors. Presented information attracted huge attention and were strong and relevant technical aspect of last conferences. Our clients received great amount of reliable information instead of marketing instruments. Confirmation of this information they could see personally thanks to measurements done with modern gauges and experiments conducted as in professional laboratories.



It should be pointed out that applying colour diodes or tunable white technology is not only titbit, but a new trend, which will be paved the way in the lighting industry. Human Centric Lighting was the main theme of our last summer conferences. During lectures our guests with interest listened to presentations about light quality, its influence on our mood and colour adjustment as well as artificial light intensity to natural light at a specific time of a day. This important issue was explained in details during practical and theoretical parts of our conferences, but also in a new product brochure dedicated for HCL, which we talk about in new section of our magazine-Novelties. We would like to encourage you to read and get familiar with electronic version of our materials in a tab „Download” on our website.

Well, after such a dose of knowledge it is time for relax and leisure. Water sport and evening attractions is an inseparable part of our summer technical conferences which is expected by everybody. Also here we have implemented few changes. This time directors and managers headed by General Director Rafal Wesolowski and Production Plant Director Michal Szybalski took a group of clients on quiet lake cruise. It is worthy to mention that Mikorzynskie Lake is connected with other lakes by long system of canals, which makes it a perfect place for such voyages. After reaching Slesinskie Lake boats were fastened together and when they were freely floating everybody soaked up the nature.

Intensive day ended with festive dinner, which is also famous for its annual attractions and surprises. This time we prepared two. The main attraction was a multimedia show „Logo Show”. Known from a „Got Talent” show group Multivisual presented performance created only for our conferences. The whole show is a ply of lights and holograms arranged in various patterns even words or logos, e.g. LUXIONA or troll. Clients who took part in shows were pretty interested in them. Many of our clients were recording show on their Smartphone. For many of them it was very new attraction, therefore it really pleasant that we are still able to surprise you.

The second attraction which we have prepared for you was demonstration of sports bikes from Supermoto. This discipline is a combination of rally on asphalt and gravel roads. One of our sales representatives, Rafal Perkowski is a passionate and successful professionalist in this sport. LUXIONA Poland is one of the sponsors in Supermoto. Currently Rafal is on fourth position in general classification. Special tent was a place where we could admire from a close these spectacular motorcycles and Rafal was happy to share his knowledge about bikes and sport itself.

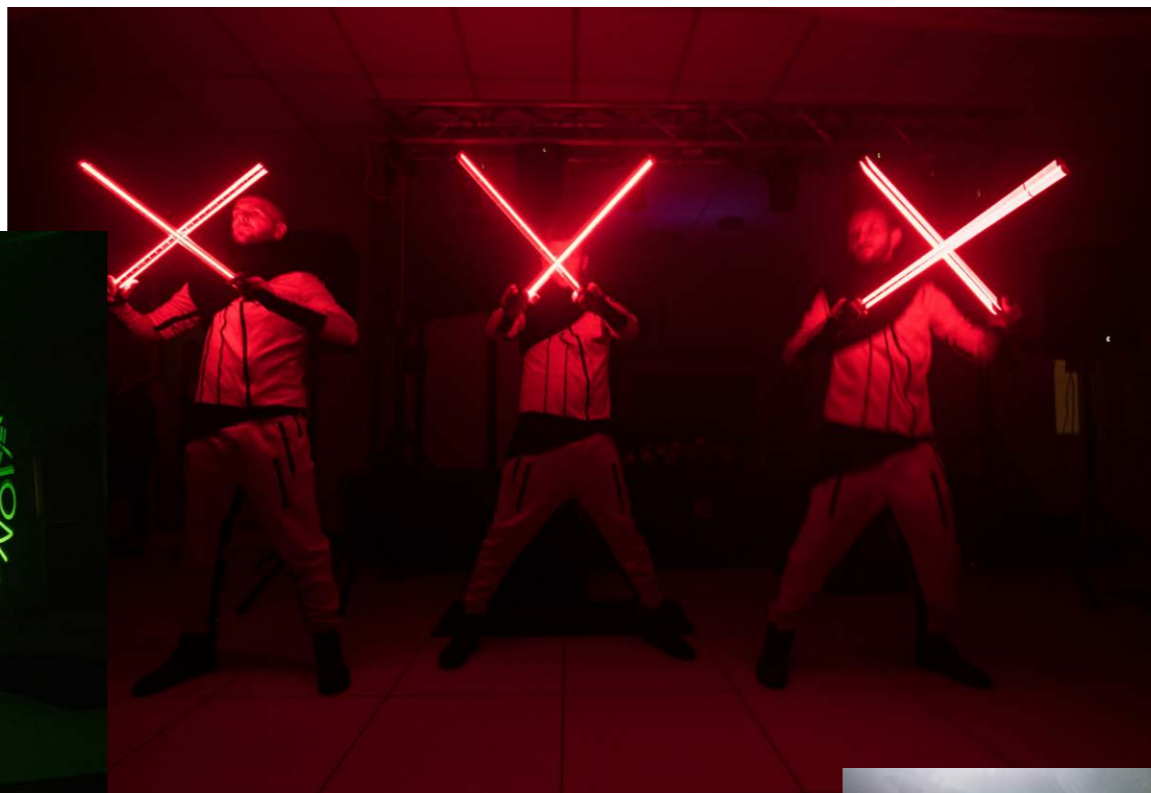
There is no doubt, that towards still pretty much same formula of the conferences and place, we have implemented many new ideas. Of course, we will diversify our conferences so as to next year surprise you again. Is it possible? We encourage you to check it out yourself.



WATER ATTRACTIONS



EVENING ENTERTAINMENT



SUPERMOTO - season 2019

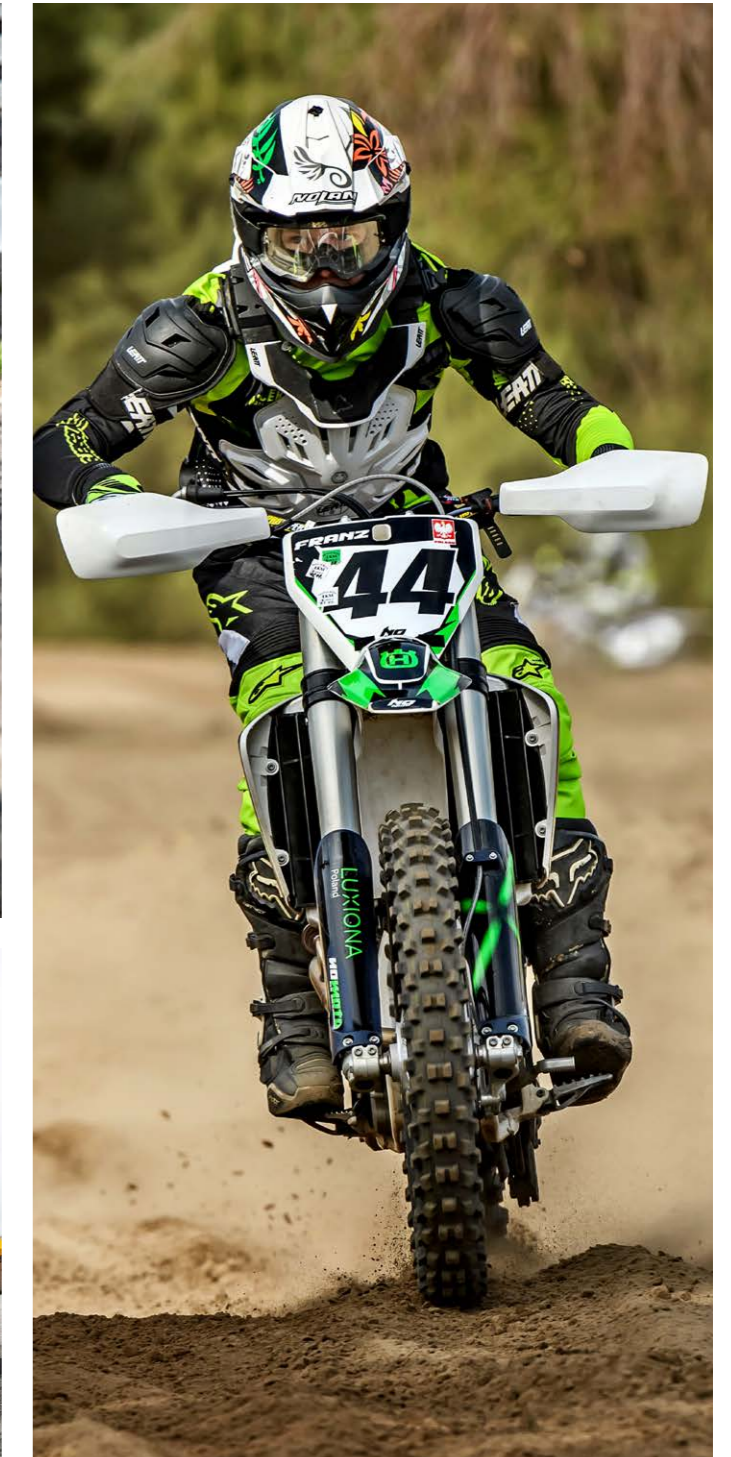
Mentioning sport bikes and Supermoto rallies we would like to familiarize you with this sport. It is kind of sport which combines elements of motocross and roads competitions. Competitions are held on asphalt, gravel, ground or sand. Motorbikes are individually customized for particular sportsman. Due to turnings at high angle and numerous falls, races are very spectacular. Below we present a short coverage from some races and comments of our employee Rafał Perkowski, who is supported by LUXIONA in each of his competitions.



Season summary

„This year Championship consisted of six round on recetrack in Koszalin, Bydgoszcz, Poznan, Slomczyn and Radom. Season 2019 accomplished on 4th position in Poland Championship S2 class individually and 3rd place as team. It was 10th season in my career so far and for sure not the last! Now is time for intensive autumn-winter training on MX motorbike.”

With greetings
Rafał Perkowski



OFFICE AND ARCHITECTURE

JAGIELLONIA BIAŁYSTOK

Location: Białystok

Description: The sport facility opened in June 2019 is a training centre of football club Jagiellonia Białystok, where children's and youth's teams train, as well as first team which on every day basis plays in Ekstraklasa (top league in our country). Our company lit here whole building beginning with warm-up room, locker rooms and sanitary facilities and ending at offices. However, the most splashy are the conference room and the entrance hall. For suspended hexagonal plates we selected luminaires of the same shape-Artshape Six LED, Edge version (arms of figure glow) and Full version (whole surface gleams).



Products:



ARTSHAPE SIX LED



Applied luminaires: Artshape Six LED Edge / Full



Applied luminaires: Artshape Six LED Full



Applied luminaires: Artshape Six LED Edge



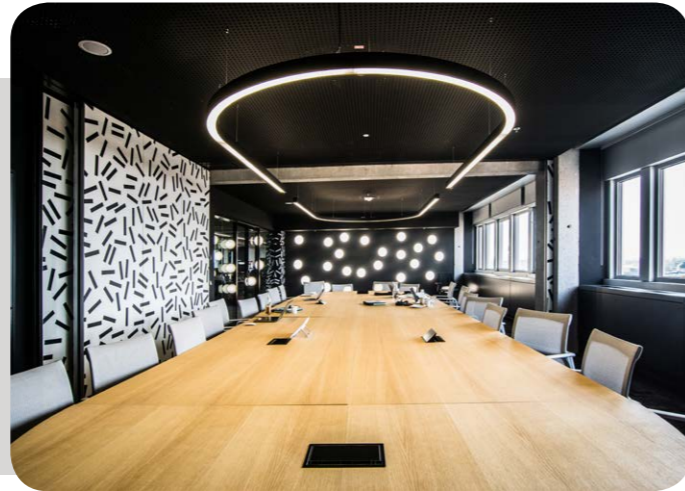
Applied luminaires: Artshape Six LED Edge / Full

OFFICE AND ARCHITECTURE

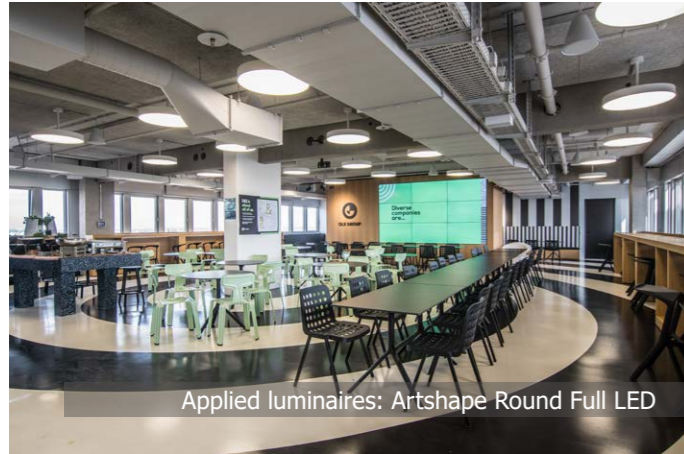
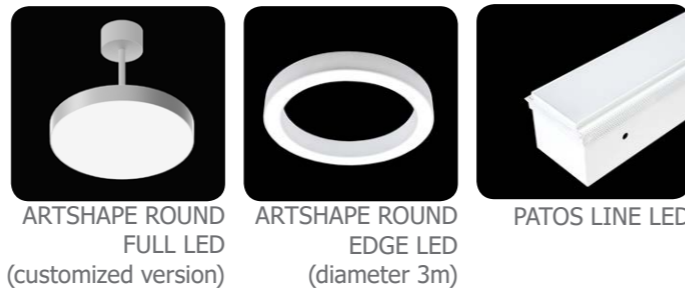
OLX

Location: Berlin

Description: In the city centre of German capital city, nearby Alexanderplatz is based OLX main office. Individual rooms as well as common space designed by architects look very impressive. Delivered luminaires were designed according to requirements of an architect. As a base product we used architectural luminaires of Artshape Round family of impressive dimensions: circle of 3m diameter and two luminaires of U shape. Canteens are equipped with tens of Artshape Round Full luminaires fastened to a special arm. In one of the corridors there are 'randomly' spread Patos Line LED luminaires.



Products:



OFFICE AND ARCHITECTURE

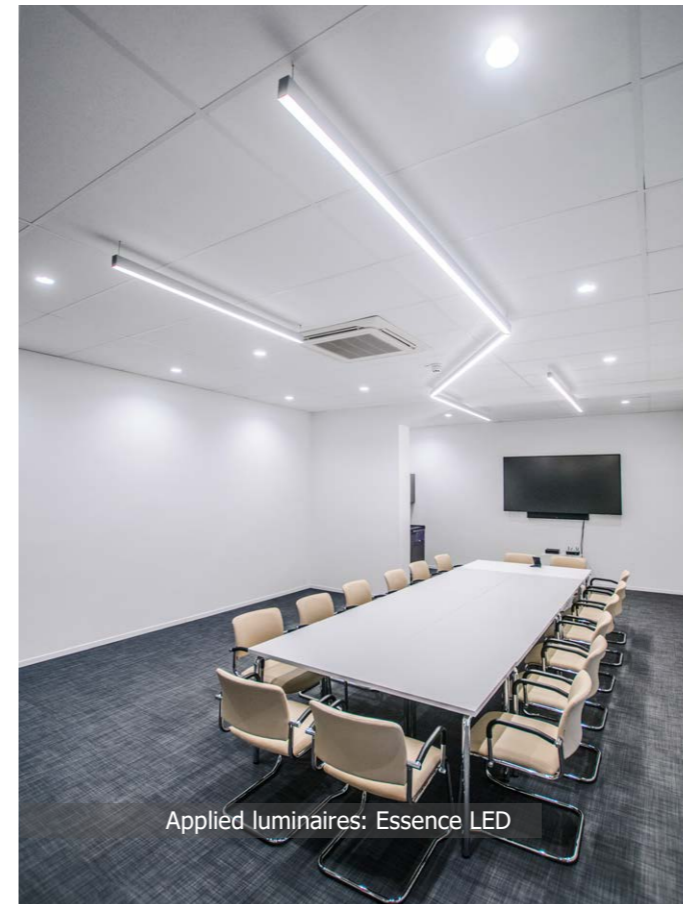
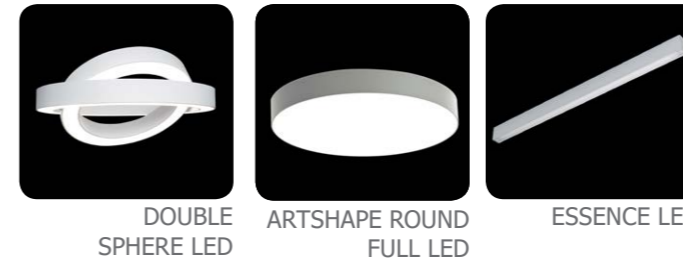
ADO

Location: Berlin

Description: ADO is one of the biggest housing cooperatives in Berlin, which in association with our company fulfils its housing investments. For standard module ceilings, LUXIONA proposed interesting solutions in the form of architectural luminaires-Double Sphere that is double gleaming rings with possibility of any inclination to each other. Artshape Round Full version (round luminaire luminous uniformly of the whole its surface) as well as longitudinal lighting lines of narrow profile that is Essence LED were applied in this building.



Products:

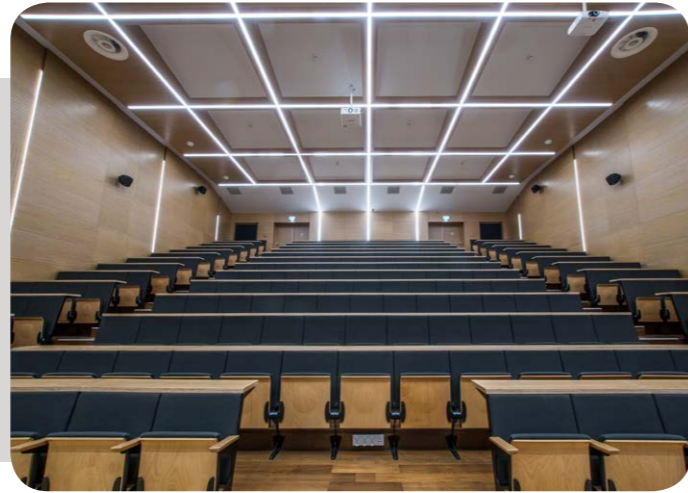


OFFICE AND ARCHITECTURE

AUDITORIUM OF INSTYTUTE OF PHYSICS

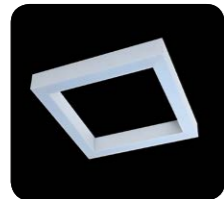
Location: Torun

Description: Rebuilt and modernized auditorium of Institute of Physics University of Mikolaj Kopernik in Torun. Technologically advanced room stands alone primarily thanks to cutting-edge lighting. There are mainly Patos Line Led line luminaires along with system of lighting connectors T and X. Above the white boards you can see square X-Line luminaires SQ N LED and Tear LED projectors. Walls and stair treads are illuminated by LED Lampas profiles.



The auditorium received the award of 'Building of the Year' in category 'modernized and adapted existing buildings' in architectural competition organized by the mayor of Torun.

Products:



X-LINE SQ N LED



TEAR LED



PATOS LINE LED



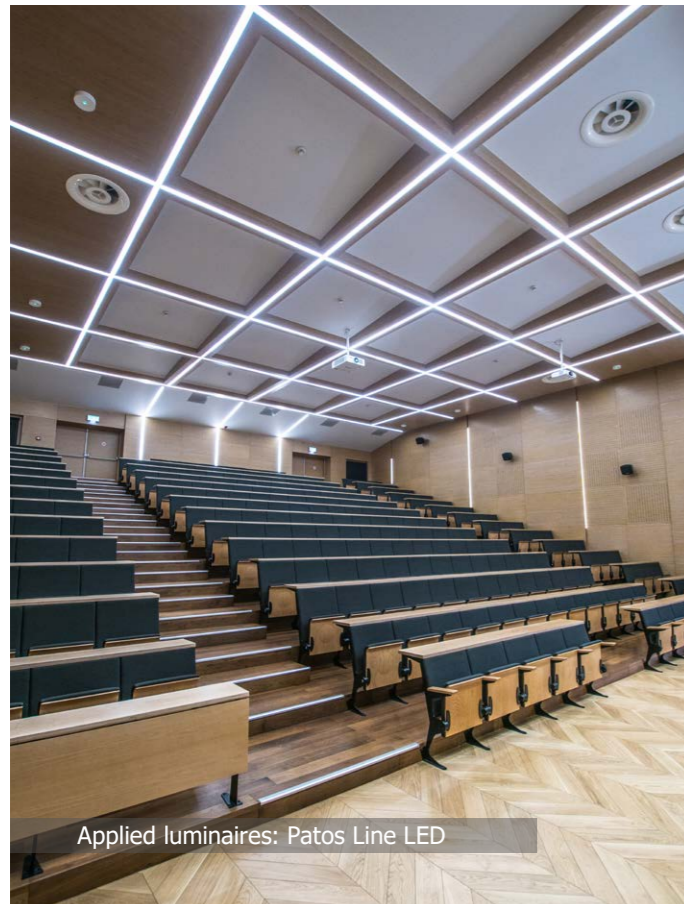
PATOS LINE LED CONNECTOR TYPE T



PATOS LINE LED CONNECTOR TYPE X



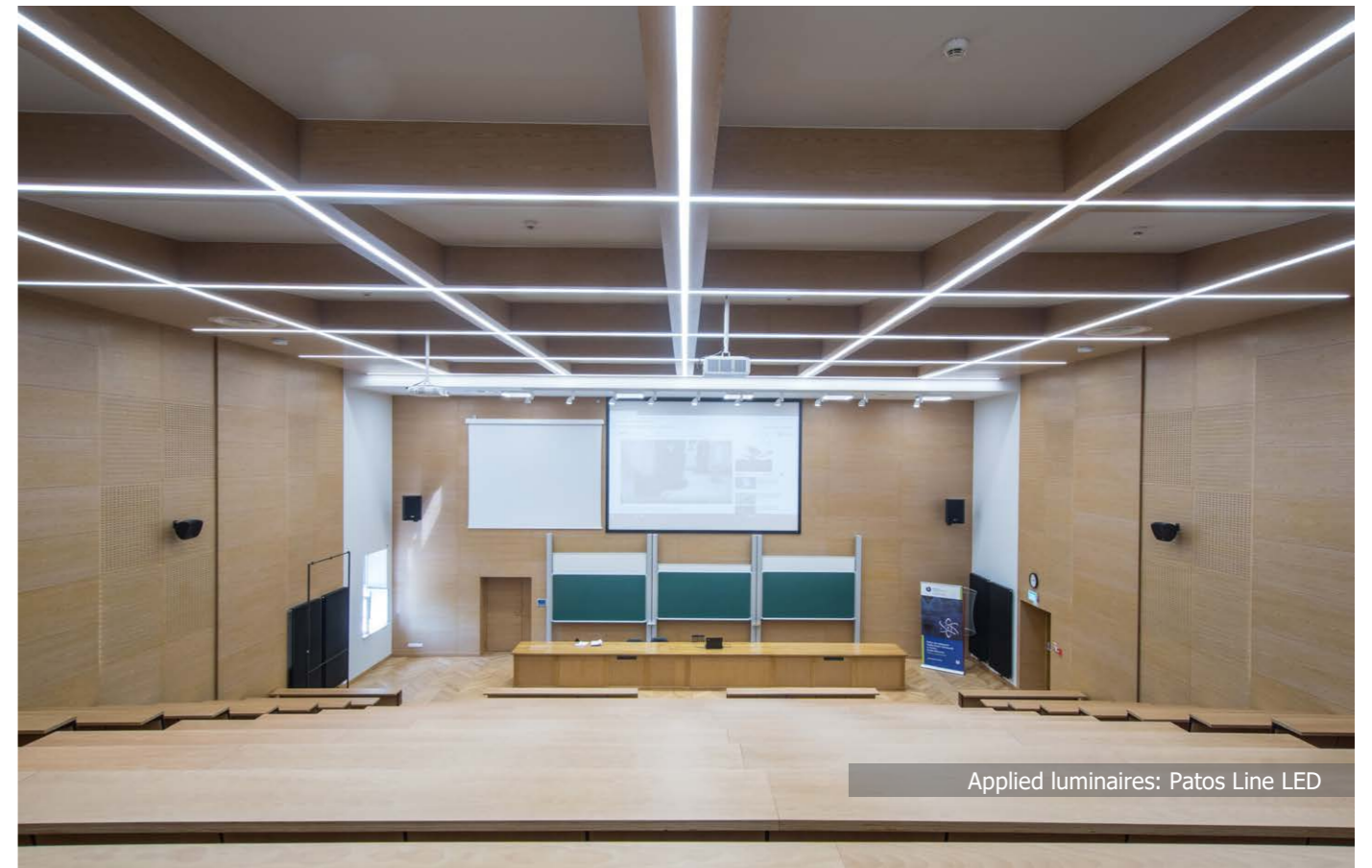
Applied luminaires: Patos Line LED, Lampas LED



Applied luminaires: Patos Line LED



Applied luminaires: Tear LED, X-Line SQ N LED



Applied luminaires: Patos Line LED

OFFICE AND ARCHITECTURE

MEDICAL UNIVERSITY

Location: Lodz

Description: The lighting of rooms in the Institute of Medical Biology and Post-graduation Studies in Medical University of Lodz represent in whole luminaires, which in large part are architectural luminaires. The most worthy of noticing are non-standard combinations of a few products in the Institute of Pharmacology and Toxicology-where you can see combination of Snake W LED, Snake V LED and X-Line LED luminaires in shapes referring to structure of proteins. Colourful corridors on the higher floors have been illuminated by alternately and ceiling mounted Snake W and Snake V luminaires.



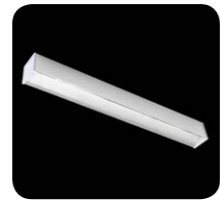
Products:



AGAT SLIM LED



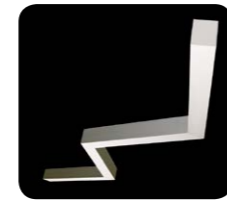
TEAR M LED



X-LINE LED



SNAKE V LED



SNAKE W LED



Applied luminaires: Snake V LED



Applied luminaires: Snake W LED



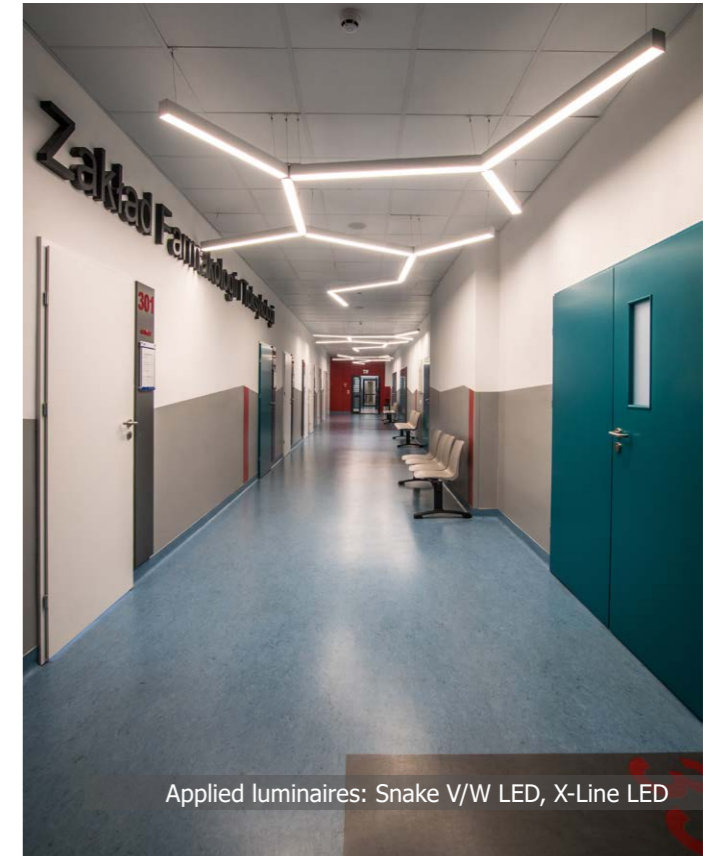
Applied luminaires: Snake V LED



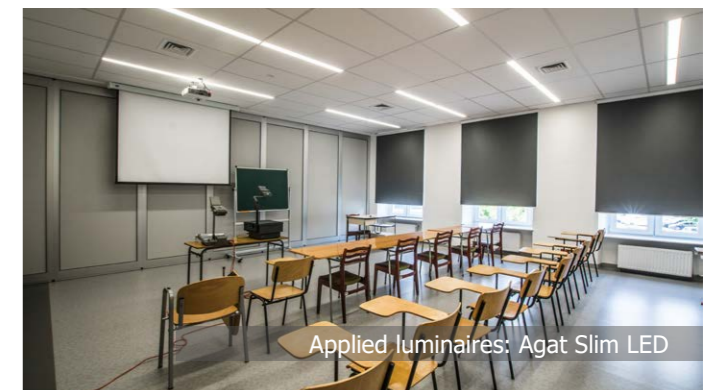
Applied luminaires: Tear M LED



Applied luminaires: Agat Slim LED



Applied luminaires: Snake V/W LED, X-Line LED



Applied luminaires: Agat Slim LED

OFFICE AND ARCHITECTURE

NON-INVASIVE MEDICINE CENTRE

Location: Gdansk

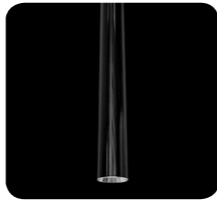
Description: Huge, six-storey building of the Centre of Non-invasive Medicine (CNM) proper to University Clinical Centre in Gdansk, consists of more than two thousands rooms. CNM is a perfect example of an application in one building luminaires of different purpose. For the needs of this project dedicated luminaires had to be created. Some of these example are three modifications: Double Sphere LED-suspended luminaire, double ring, Tondo without a diffuser-for LED light sources with a shaft GU10 and Corridor Line LED-wide, longitudinal line luminaires which illuminate lecture rooms and corridors.



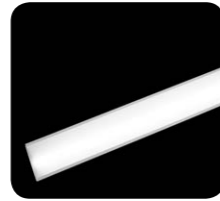
Products:



TEAR M LED



TYTAN SOPEL LED



CORRIDOR LINE LED



TONDO GU10



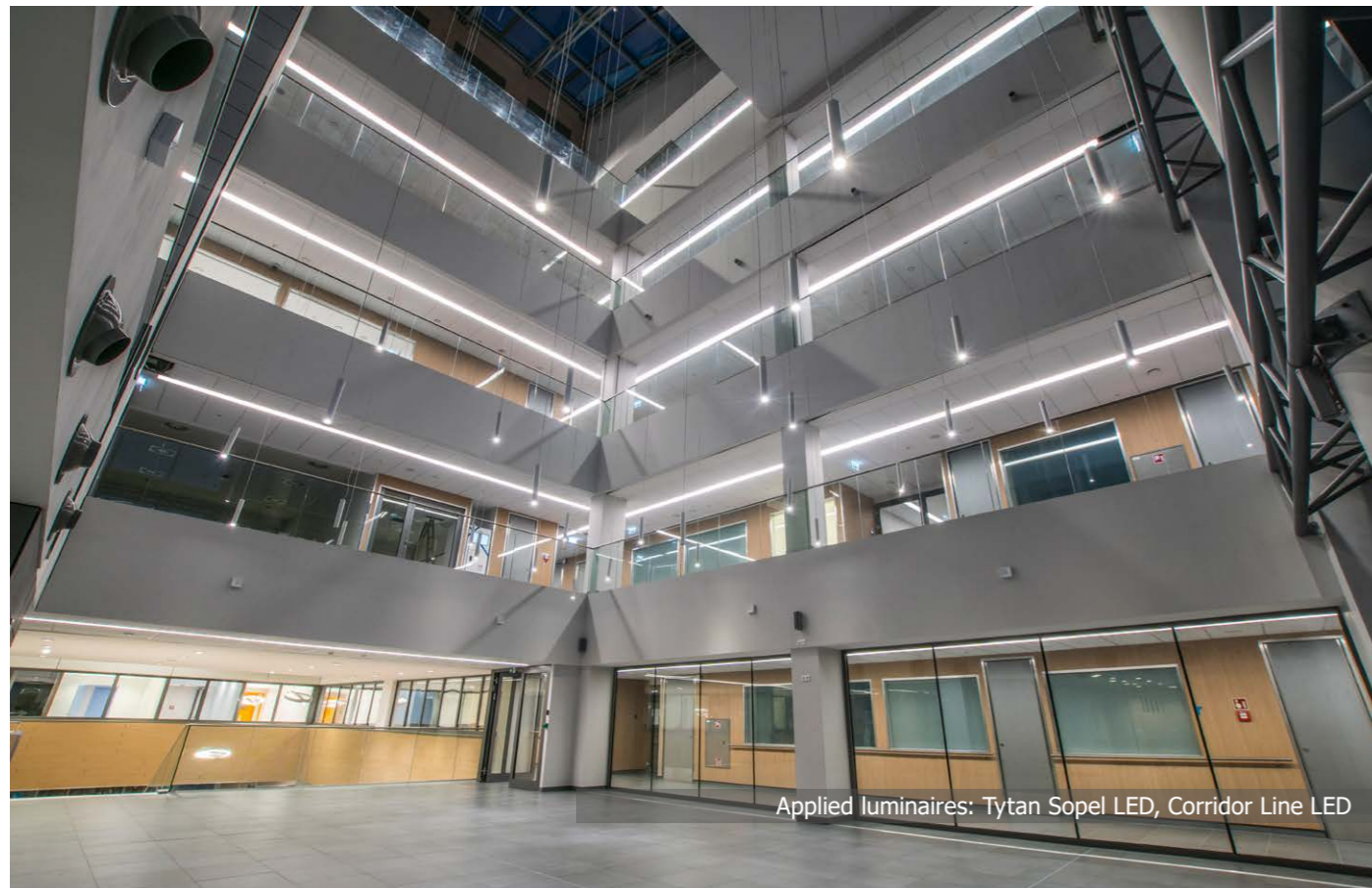
DOUBLE SPHERE LED



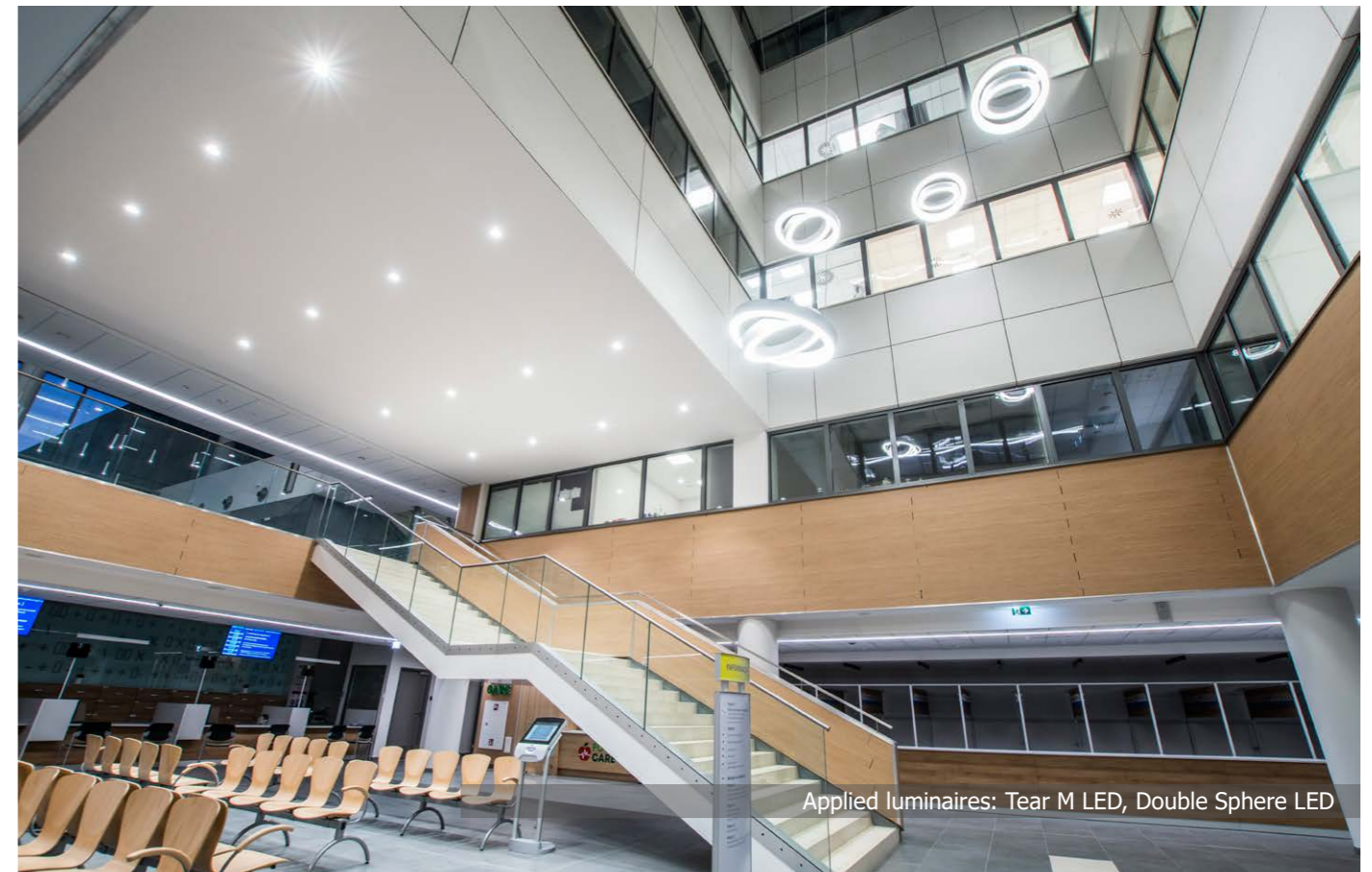
Applied luminaires: Double Sphere LED



Applied luminaires: Tondo GU10



Applied luminaires: Tytan Sopol LED, Corridor Line LED



Applied luminaires: Tear M LED, Double Sphere LED

OFFICE AND ARCHITECTURE

BABYLISS PARIS

Location: Warsaw

Description: Well known producer of hairdressing utensil, which has head office in Warsaw, faced a task of renovating rooms of its headquarter. The result are interesting and colourfully designed interiors. Of course, such kind of modernization could not do without dedicated architectural lighting from Artshape LED series. Products of letter X shape and ring perfectly highlight designer character of the interiors. The designers also applied Snake W LED-‘broken’ lighting line. The complement of entirety are the lighting panels -Europanel LED, which in this project are present as pendant, surface mounted or recessed in suspended ceiling.



Products:



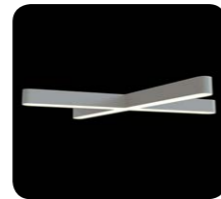
EUROPANEL LED



SNAKE W LED



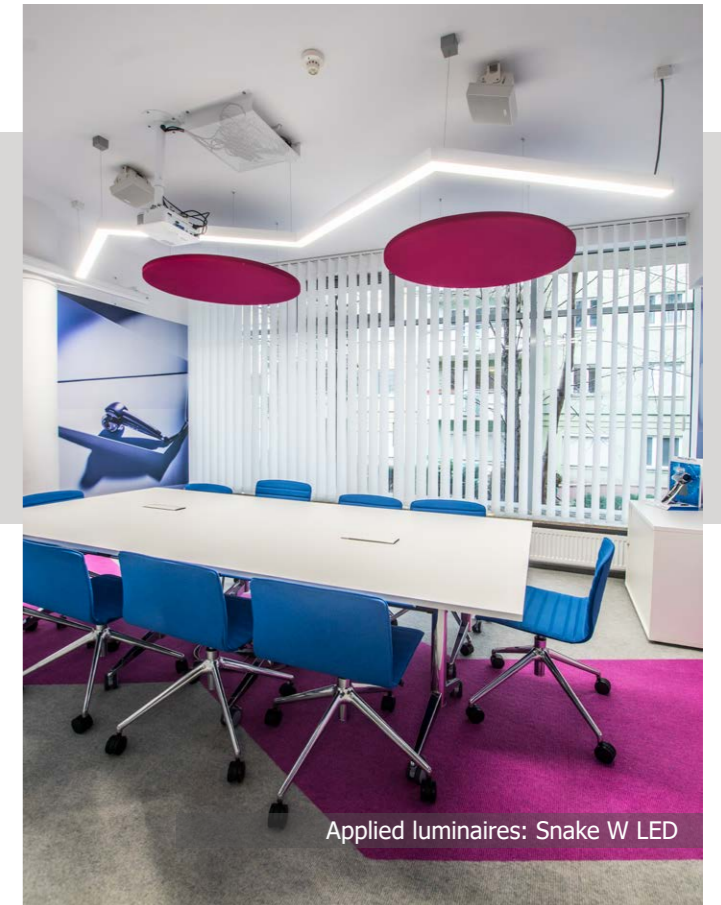
ARTSHAPE ROUND LED



ARTSHAPE X LED



Applied luminaires: Artshape X LED



Applied luminaires: Snake W LED



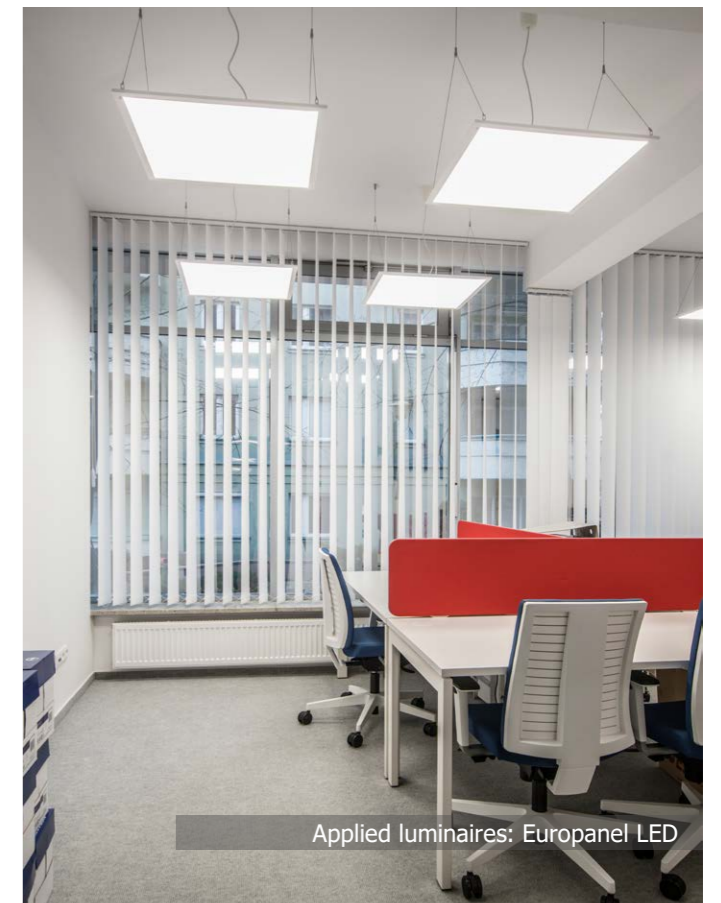
Applied luminaires: Artshape Round LED / Artshape X LED



Applied luminaires: Artshape Round LED



Applied luminaires: Europanel LED



Applied luminaires: Europanel LED

OFFICE AND ARCHITECTURE

ALIOR BANK

Location: Warsaw

Description: In public areas, in the relaxation part of the office building projectors Tear LED and pendant luminaires Lewit T made by Metalarte were applied. The Lewit T perfectly fits above tables in climatic canteen. Metalarte series luminaires represent exclusive interior lighting of prestigious buildings such as: villas, palaces, high standard hotels or directors' offices. Smaller canteen is illuminated with Tytan Sopol LED luminaires, which cylindrical tubes remind us hanging icicles and assure emphasized spot lighting.



Products:



TEAR LED



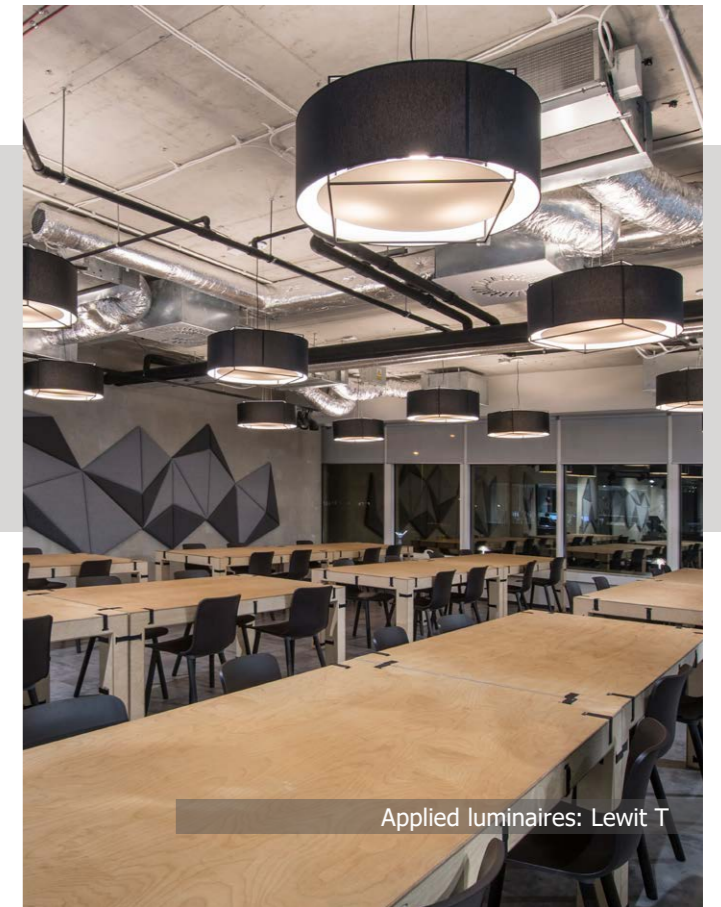
TYTAN SOPEL LED



LEWIT T



Applied luminaires: Tear LED



Applied luminaires: Lewit T



Applied luminaires: Tear LED, Lewit T



Applied luminaires: Tytan Sopol LED

OFFICE AND ARCHITECTURE

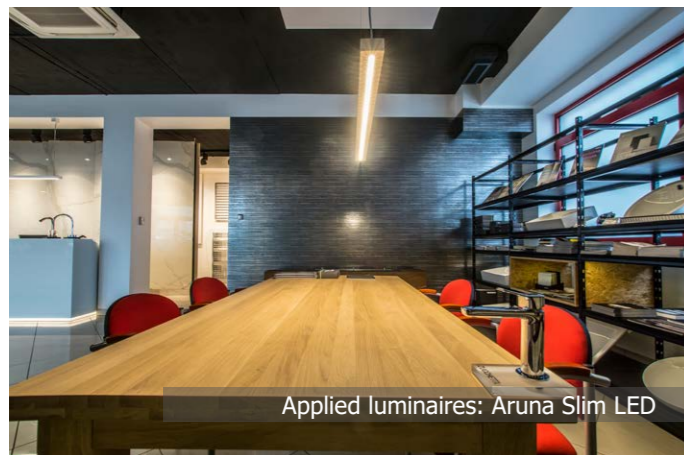
UNITHERM

Location: Gdansk, Kartuska street 391

Description: Unitherm is a company which specializes in sanitary installations and bathroom fittings and fixtures. In their Gdansk branch shop we can see impressive and stylish showroom with ready solutions and representative products. In this project Tear LED projectors were used for three-phase lines and other version of this luminaire was dedicated for suspended ceilings-Tear LED with rotated shade. This example perfectly shows how products fulfil their tasks by lighting objects in shops, displays or art galleries. All is completed by single luminaires Aruna Slim LED above tables and the reception.



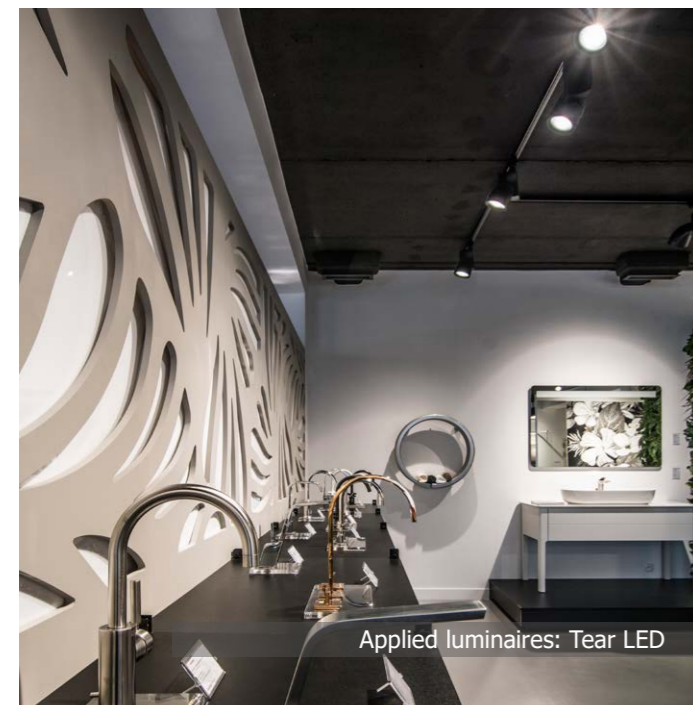
Products:



Applied luminaires: Aruna Slim LED



Applied luminaires: Tear M LED



Applied luminaires: Tear LED

OFFICE AND ARCHITECTURE

RELAXATION ZONE

Location: „Port Łodz” shopping mall, Łodz

Description: Climatic place in a quiet corner of gigantic shopping centre probably supposed to be retreat from noise and crowds. It is designed the way that anybody could sit, stop for a moment and rest. Except for interestingly designed interior with colourful seats, tables or interactive games, in the relaxation area there is also architectural lighting. For the needs of this place very interesting and one of its kind modification of popular luminaire Snake LED was created in the shapes of letters U and S. it shows what kind of flexibility has been achieved in order to adjust the product to own requirements.



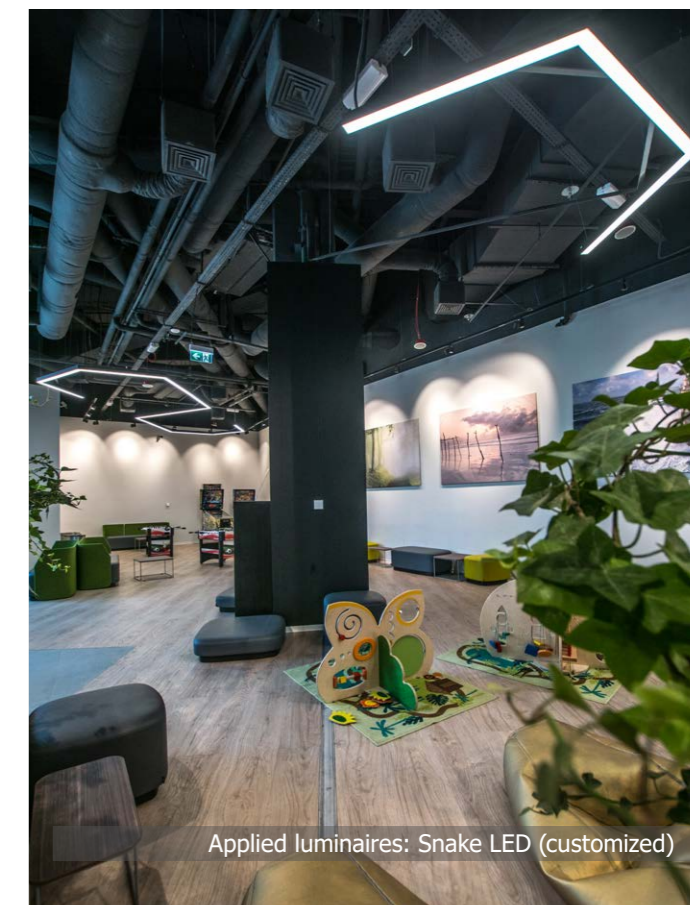
Products:



SNAKE LED customized version



Applied luminaires: Snake LED (customized)



Applied luminaires: Snake LED (customized)

INDUSTRY AND SPORT

NITROGEN FERTILIZER FACTORY

Location: Pulawy

Description: This factory is one of the biggest plants in the world specializing in production of nitrogen fertilizers. It is the biggest enterprise in Poland from heavy chemical synthesis. The complex consists of two production lines of granulated fertilizers, where more than a thousand of tonnes of saltpetre and nitro-chalk are produced daily. It is huge and prestigious investment, in which lighting plays significant role. For the toughest chemical conditions Grupa Azoty chose luminaires from Tube LED family and Neptun LED V1, with the number of luminaires counted in hundreds.



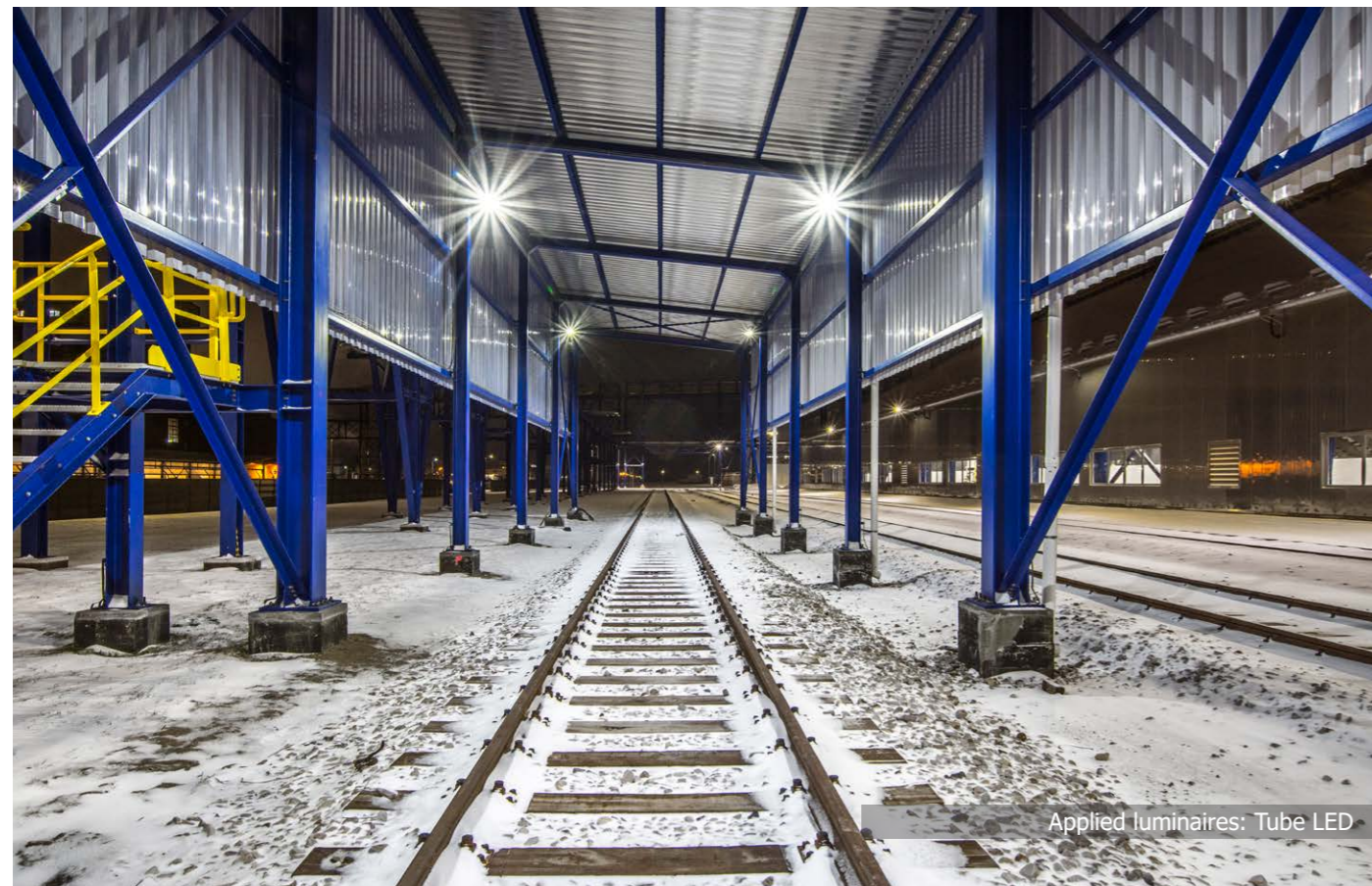
Products:



TUBE LED



NEPTUN LED V1



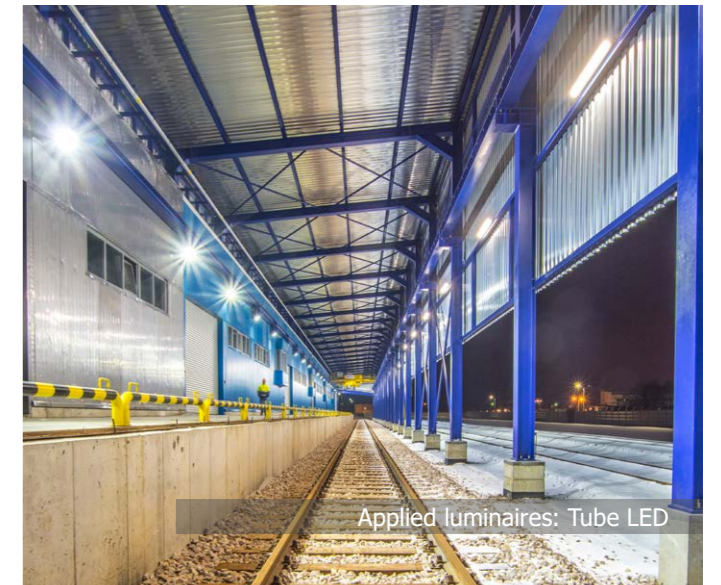
Applied luminaires: Tube LED



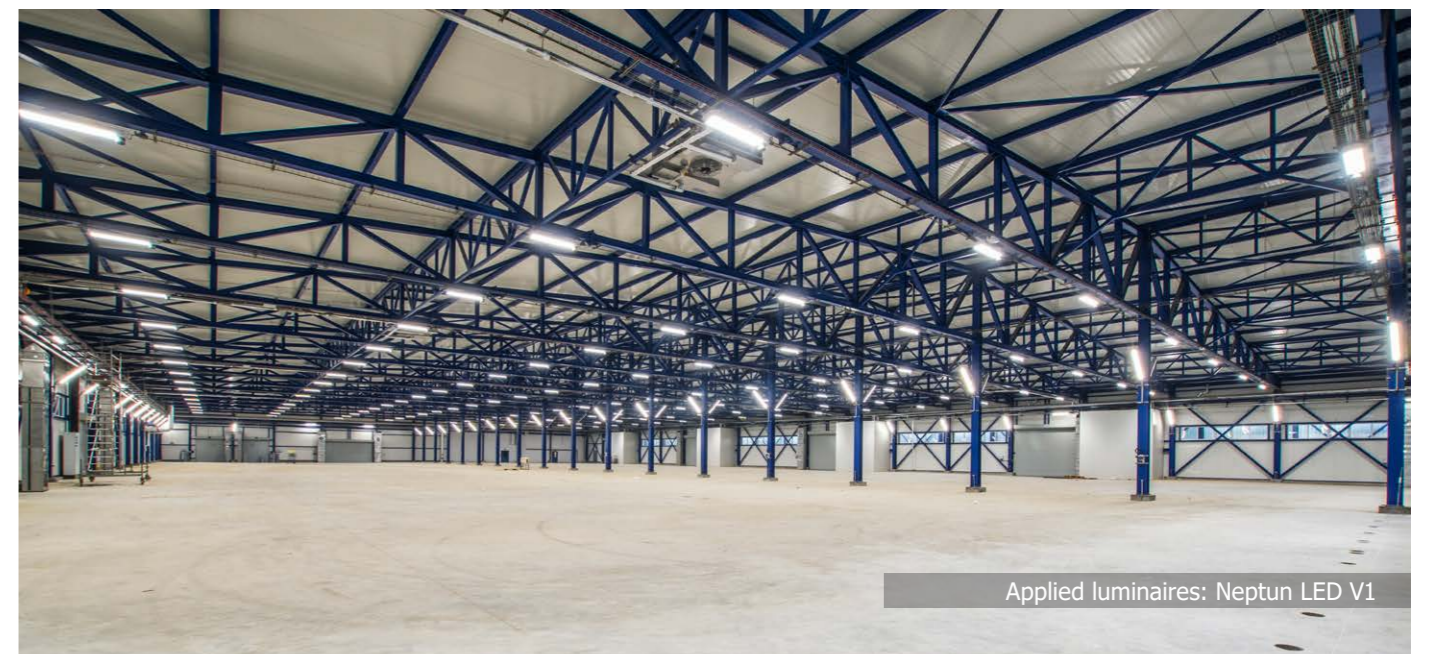
Applied luminaires: Neptun LED V1



Applied luminaires: Tube LED



Applied luminaires: Tube LED



Applied luminaires: Neptun LED V1

INDUSTRY AND SPORT

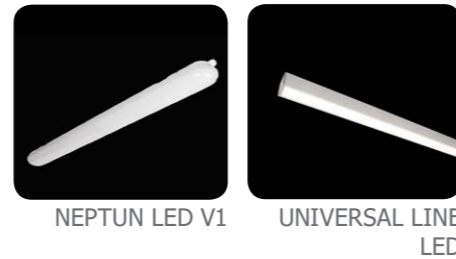
RIDING HALL

Location: Boleslawowo

Description: Secondary School of Agriculture in Boleslawow, a town located in picturesque part of Poland called Kashubian Switzerland, obtained new riding hall. The main hall was illuminated with single luminaires of Universal Line IP 65. By the way, it is worth to mention that it is the product which exists not only as a single version, but primarily as system versions to be connected into lines. Stables on the other hand are illuminated with hermetic luminaires Neptun LED V1, which ideally meet the requirements of dustproof and waterproof as well as big changes in ambient temperatures.



Products:



Applied luminaires: Universal Line LED



Applied luminaires: Neptun LED V1



Applied luminaires: Neptun LED V1

INDUSTRY AND SPORT

SLAUGHTER & PROCESSING PLANT

Location: Radom

Description: Processing plant in Radom is one of the most modern plants in food industry. Production capacity reaches 350 thousands of chickens per day. Such a huge and modern building required specialistic lighting. Our luminaires Rubin Clean INOX, which housing is made of stainless steel, met the expectations. Additionally, the luminaires were equipped with LED light sources which emit blue light. This solution allowed us to meet the needs of the investor and it was the answer to difficult conditions in the building.



Products:



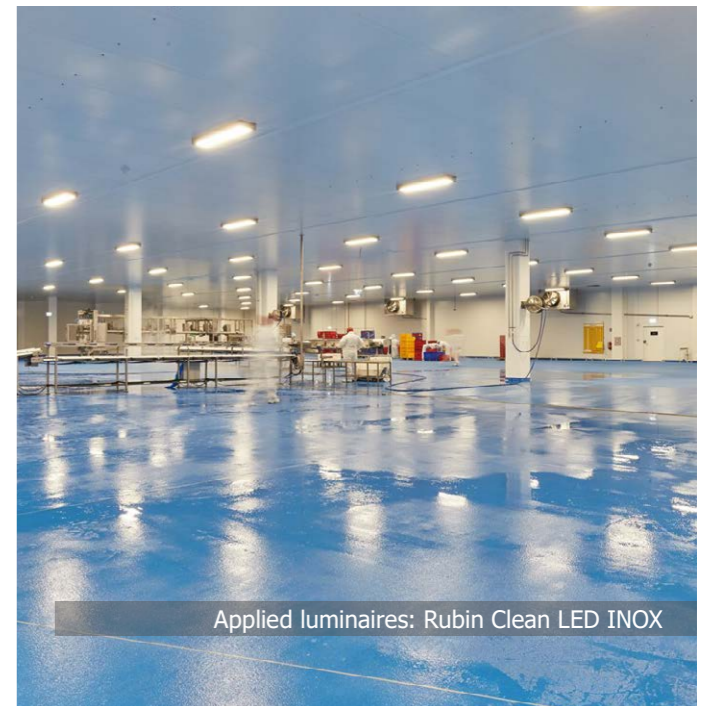
RUBIN CLEAN LED INOX



Applied luminaires: Rubin Clean LED INOX



Applied luminaires: Rubin Clean LED INOX



Applied luminaires: Rubin Clean LED INOX

RESIDENTIAL AND OUTDOOR LIGHTING

MILITARY REPLENISHMENT COUNCIL

Location: Bydgoszcz

Description: Splendid villa was built in 1885, under the last will of Luiza Gisse-Rafalska. Since 1957 the building is a head office of Military Replenishment Council (WKU) in Bydgoszcz. Walls made of red bricks and white cornice were spectacularly illuminated thanks to this we can admire beautiful illumination. The effect was achieved using Fasad Wall luminaires mounted on walls and placed in the ground Fasad ODL04 luminaires.



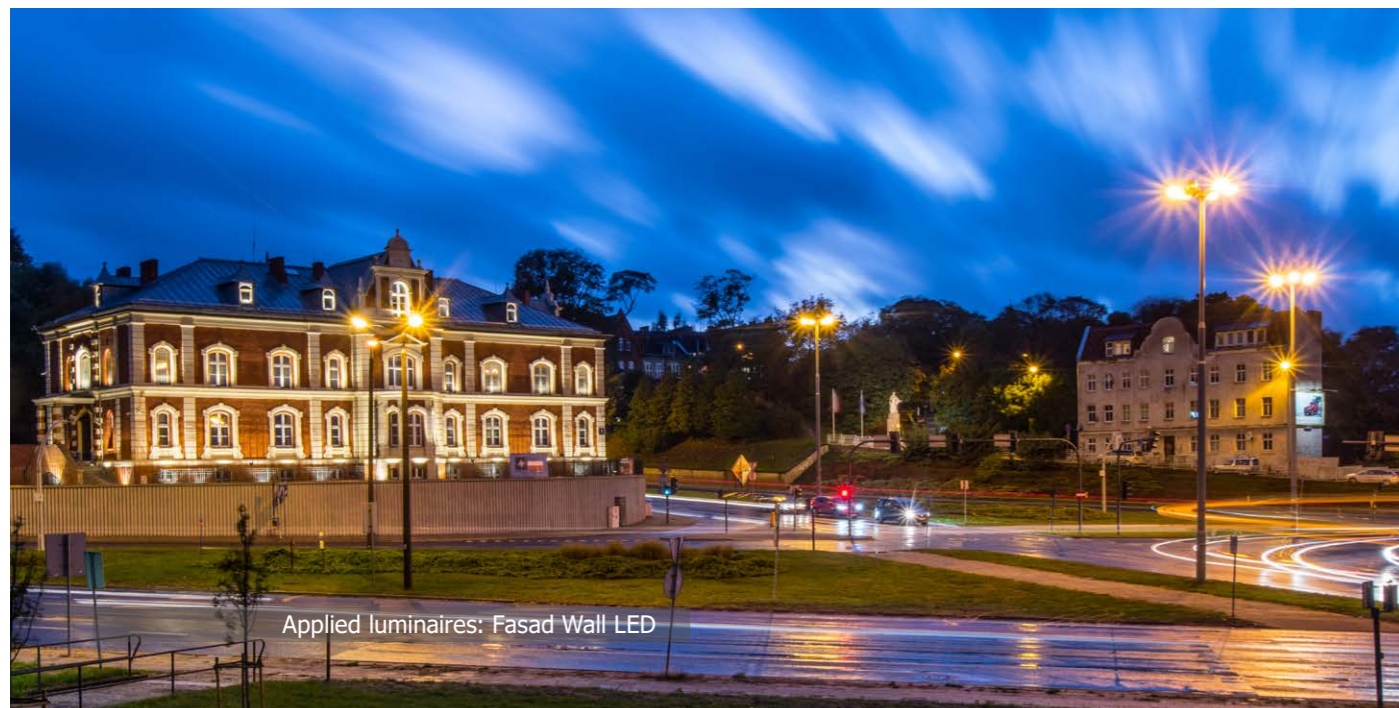
Products:



FASAD ODL04 LED FASAD WALL LED



Applied luminaires: Fasad Wall LED, Fasad ODL04 LED



Applied luminaires: Fasad Wall LED

RESIDENTIAL AND OUTDOOR LIGHTING

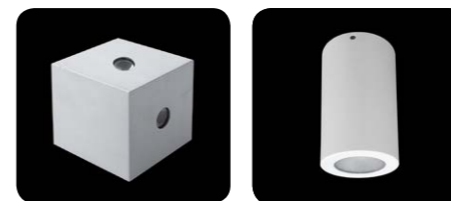
ELCLIM

Location: Torun

Description: The illumination of small but modern building, which belongs to Elclim company and which deals with comprehensive and complex design of electrical installation works. The facade of the building was illuminated with Kubik LED luminaires of two-way light distribution (up/down), but also of two different distribution: narrow and wide, which allows to compare visual differences of lighting as well as final effect. Additionally, the entrance to the underground parking is illuminated with Beryl N12/230 down light luminaires surface mounted of IP65.



Products:



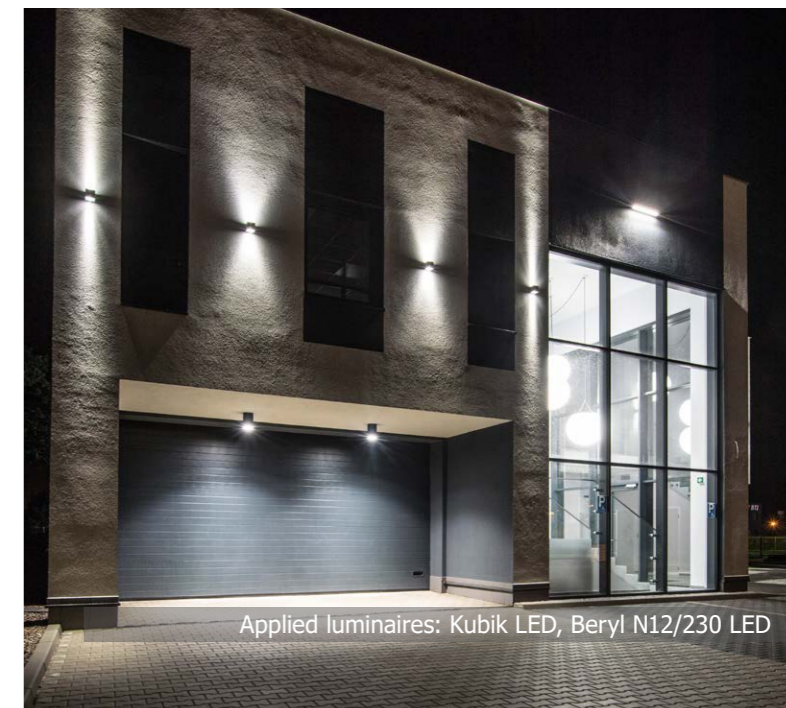
KUBIK LED BERYL N12/230 LED



Applied luminaires: Kubik LED



Applied luminaires: Kubik LED



Applied luminaires: Kubik LED, Beryl N12/230 LED

RESIDENTIAL AND OUTDOOR LIGHTING

OSIEDLE NA WOLI

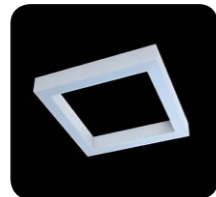
Location: Warsaw

Description: Wola is one of the fastest developing district of Warsaw. Its inseparable elements are modern housing estates. Here we can find examples of interior and exterior luminaires. Colourful and stylish corridors along with entrances have been illuminated with surface mounted luminaires-X-Line LED luminaire and square X-Line SQ N LED luminaire. In turn, outside patio and pathways are illuminated with Tosca LED park posts and huge car park is illuminated with Streetpark LED luminaires.



Applied luminaires: Tosca LED

Products:



X-LINE SQ N LED



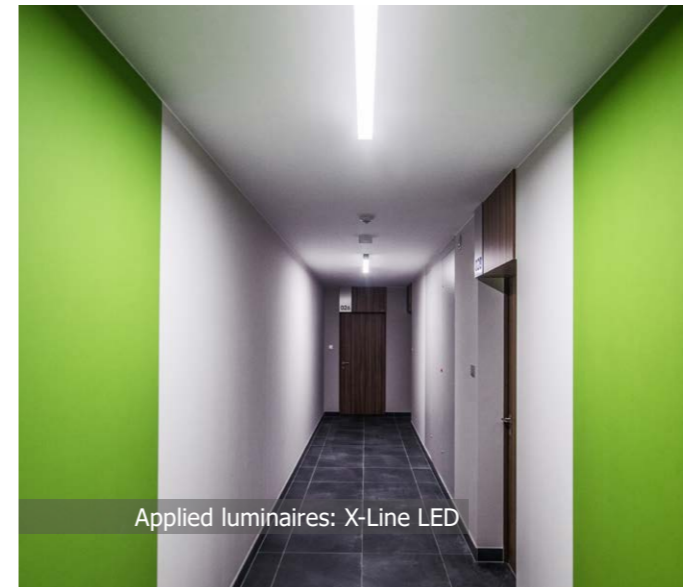
TOSCA LED



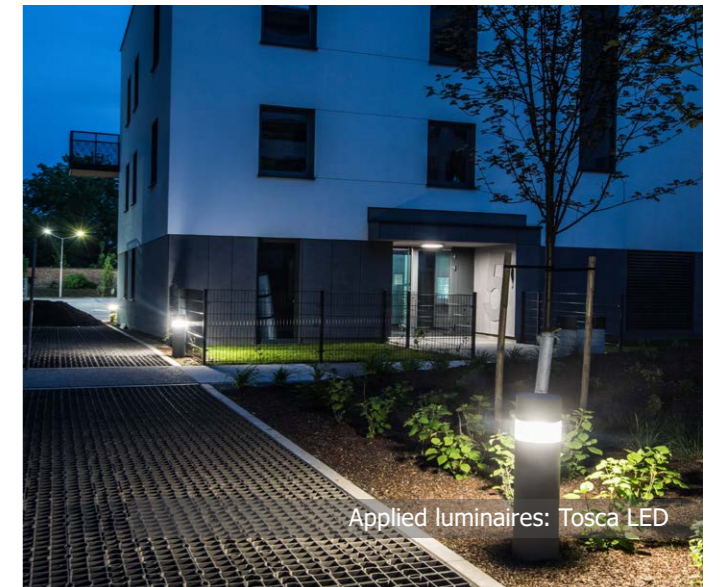
X-LINE LED



STREETPARK LED



Applied luminaires: X-Line LED



Applied luminaires: Tosca LED



Applied luminaires: X-Line SQ N LED



Applied luminaires: Streetpark LED

RESIDENTIAL AND OUTDOOR LIGHTING

KADZIELNIA RESERVE

Location: Kielce

Description: Kadzielnia Reserve is a geological park, which is an icon of this city as well as the swietokrzyski region well known as a true repository of knowledge related to development of geological education, palaeontology or archaeology. Our first lighting was installed in caves in 2012. In the highly moisture environment and water constantly flowing on the walls, our architectural luminaires Kubik LED and Roller LED, which serve to illuminate, light till today. Only recently, after the modernization of reservation in 2019, there has been illuminated also outside area. Famous Geologists' rock, Amphitheatre parking and main street are illuminated with Sparta LED, Streetpark LED and Pareo New LED luminaires.



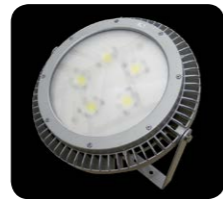
Products:



KUBIK LED



ROLLER LED



SPARTA LED



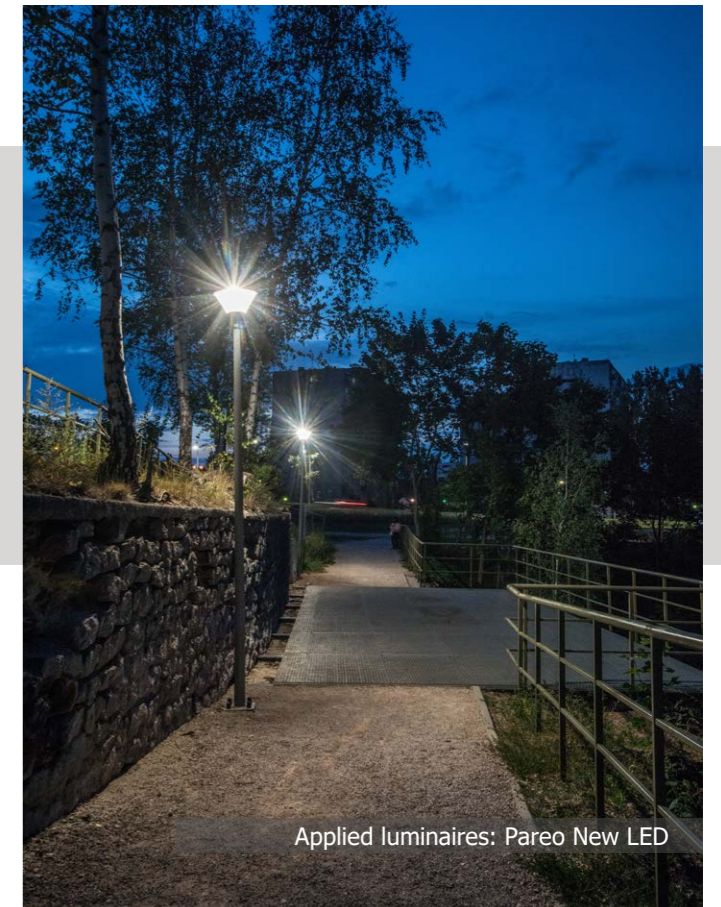
STREETPARK LED



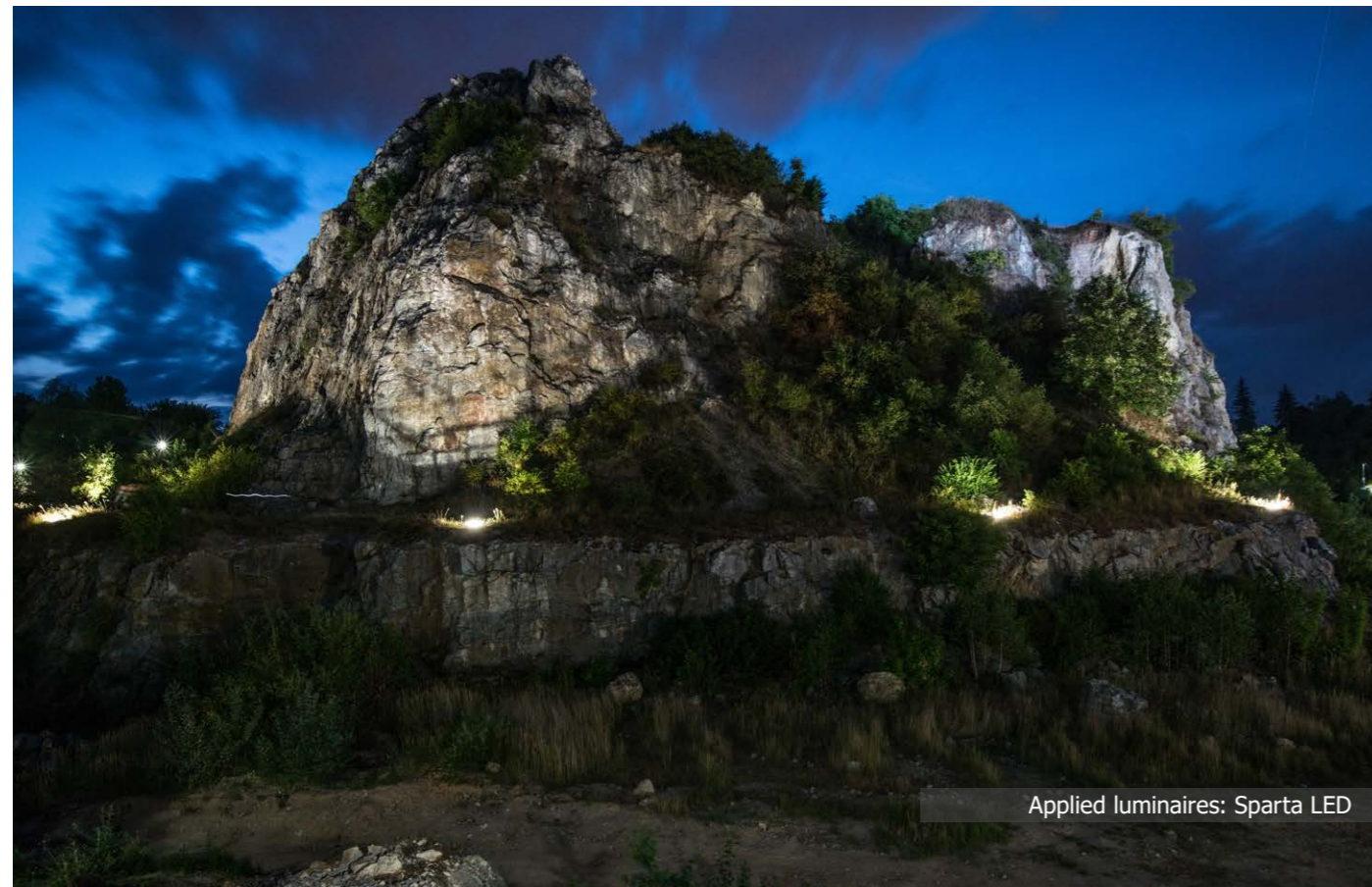
PAREO NEW LED



Applied luminaires: Kubik LED, Roller LED



Applied luminaires: Pareo New LED



Applied luminaires: Sparta LED



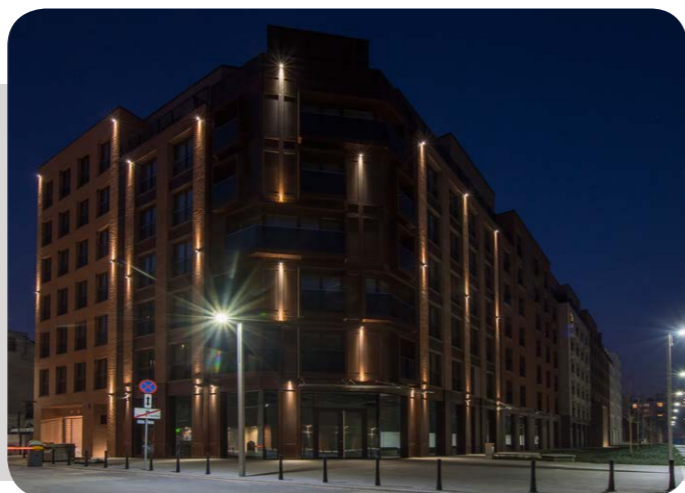
Applied luminaires: Sparta LED, Streetpark LED

RESIDENTIAL AND OUTDOOR LIGHTING

PORT PRASKI

Location: Warsaw

Description: Another realisation of a huge and modern housing estate project is again in our portfolio. Newly opened and put into service residential buildings in 4A Sierakowskiego Street and 8-9 Okrzei Street reveal their true colours after dusk, where outside illumination of facades creates unusual light effects on walls. All these effects were achieved thanks to Kubik and Beryl KN Up&Down luminaires. On the other hand Tytan Sopel and new X-Line Slim-light line closed in a narrow profile were applied in representative receptions. Outside patio is illuminated with Kubik Pole ODB luminaires that caused this luminaire to be the most popular park luminaire in the whole Port Praski.



Products:



TYTAN SOPEL LED



KUBIK LED



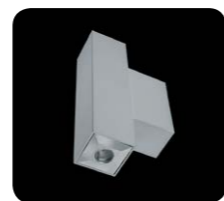
KUBIK POLE ODB



X-LINE SLIM LED



BERYL NEW LED O



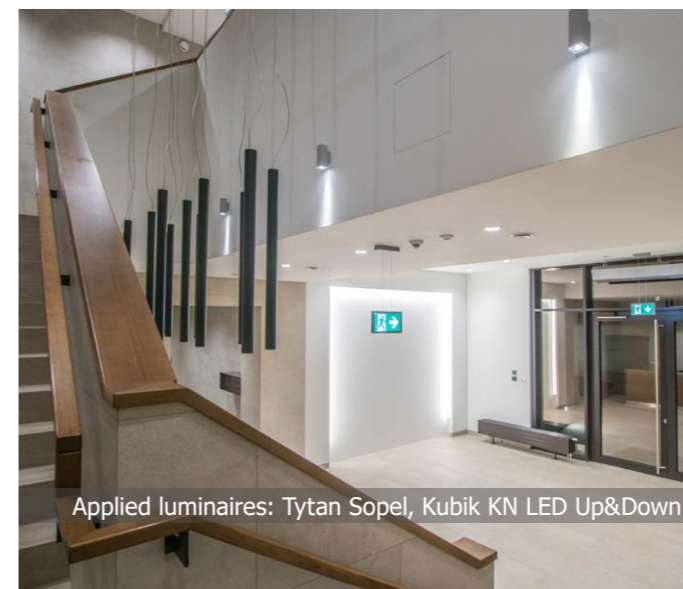
BERYL KN LED UP&DOWN



Applied luminaires: X-Line Slim LED



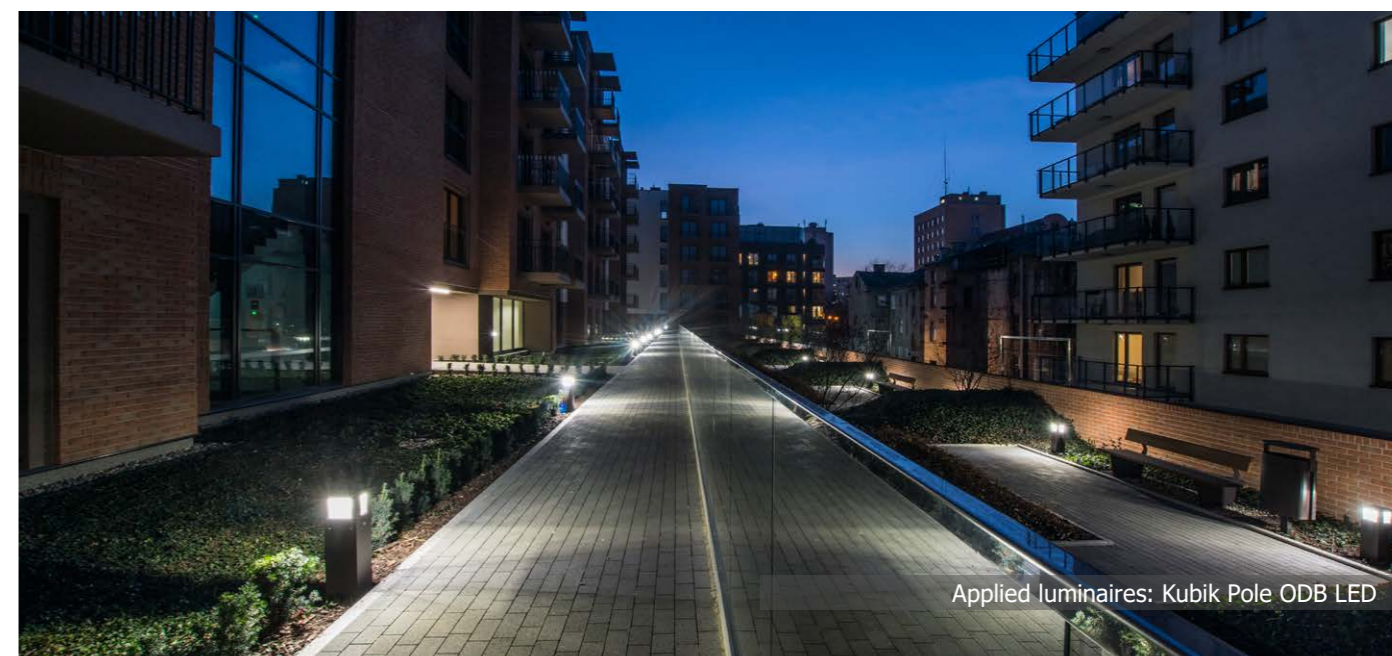
Applied luminaires: Tytan Sopel LED, X-Line Slim LED, Beryl New LED O



Applied luminaires: Tytan Sopel, Kubik KN LED Up&Down



Applied luminaires: Kubik LED



Applied luminaires: Kubik Pole ODB LED

RESIDENTIAL AND OUTDOOR LIGHTING

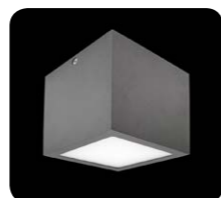
ENERGA STADIUM

Location: Gdansk

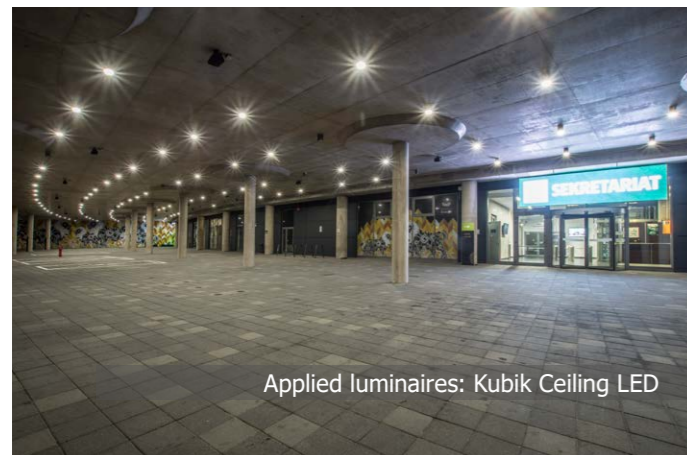
Description: We would like to introduce you another lighting realization of LUXIONA Poland. The main entrance and at the same time presentable entrance of Gdnask stadium was illuminated with almost 200 pcs of Kubik Ceiling LED. Modern football stadiums are oriented on events where tens of thousands of spectators take part is the highly prestigious for every city. Therefore it was a great distinction for LUXIONA Poland to have possibility to become one of the lighting suppliers for such well known sport facility in our country.



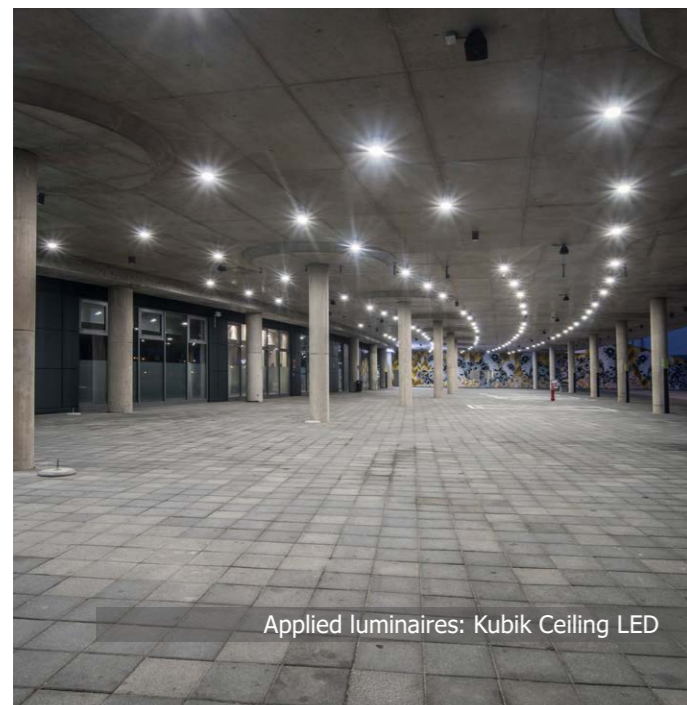
Products:



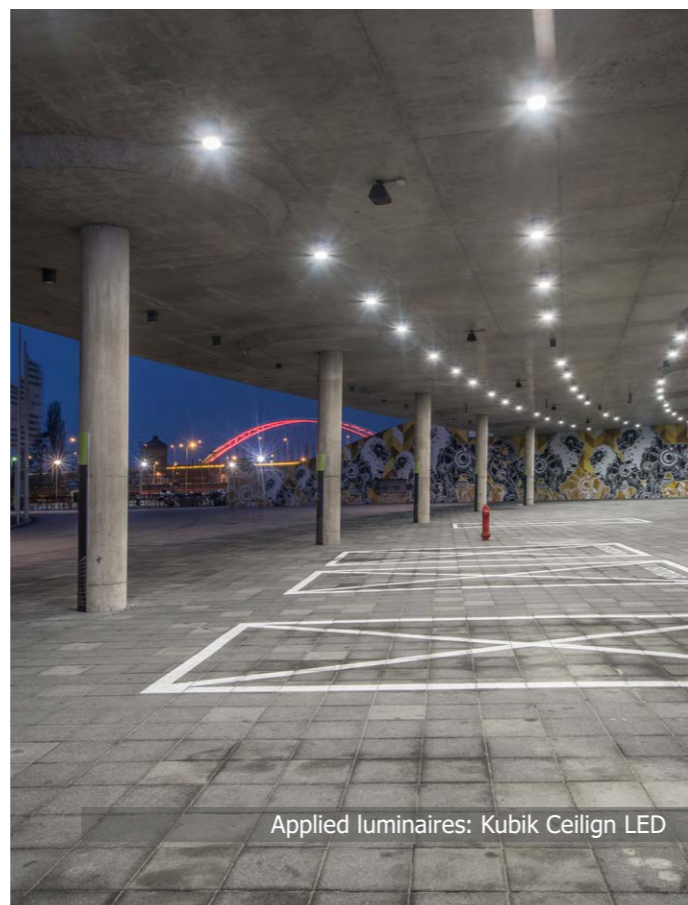
KUBIK CEILING LED



Applied luminaires: Kubik Ceiling LED



Applied luminaires: Kubik Ceiling LED



Applied luminaires: Kubik Ceiling LED

RESIDENTIAL AND OUTDOOR LIGHTING

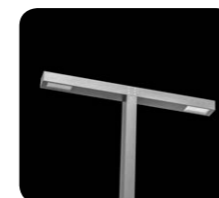
MENTOR S.A.

Location: Torun

Description: The head office building of Torun insurance company. The board of the company has resigned from traditional street lamps and decided to choose an interesting posts with built-in optical system and attractive shape of letters L and T. New profiles of these luminaires of 150x100 mm cross-section perfectly fit in this place during night or day.



Products:



KUBIK POLE T LED



KUBIK POLE L LED



Applied luminaires: Kubik Pole T LED



Applied luminaires: Kubik Pole L LED



Applied luminaires: Kubik Pole L LED

CLEAN ROOMS

HYBRID OR

Location: Olsztyn

Description: Hybrid operating rooms present the highest prestige and modernity in hospital surgical wards. In September 2018 there was the opening ceremony of hybrid operating room in Regional Specialist Hospital in Olsztyn. The hybrid room is equipped with Agat Clean LED luminaires which ensure natural white light of high CRI >95 index. The Agat Clean luminaires enable emission of green light, which shows very clearly changes in a body, for example, bleedings.



Products:



AGAT CLEAN LED
CRI90



Applied luminaires: Agat Clean LED



Applied luminaires: Agat Clean LED



Applied luminaires: Agat Clean LED

CLEAN ROOMS

DR. IRENA ERIS

Location: Piaseczno

Description: Dr Irena Eris is a well known brand in cosmetic industry. Nearby Warsaw there is a production plant and laboratories. Production of cosmetics has to be done in sterile conditions. The building must meet the specialistic requirements concerning the lighting. In this project the task was perfectly fulfilled by clean luminaires Agat Clean LED and untypical such as Agat Clean Slight.



Products:



AGAT CLEAN LED



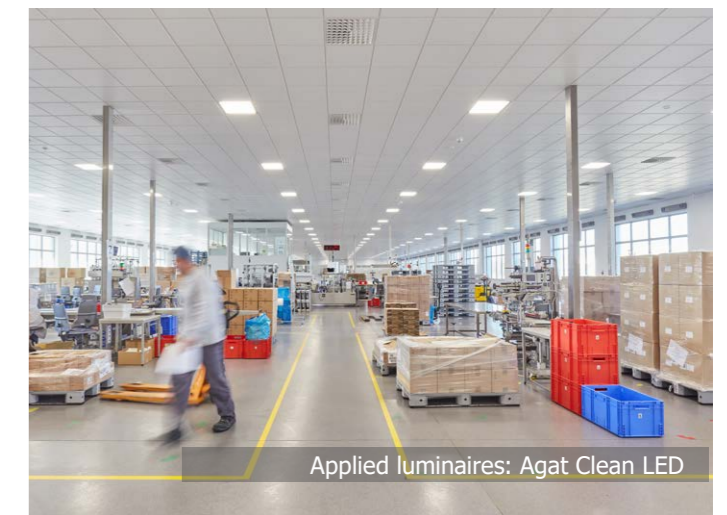
AGAT CLEAN
SLIGHT LED



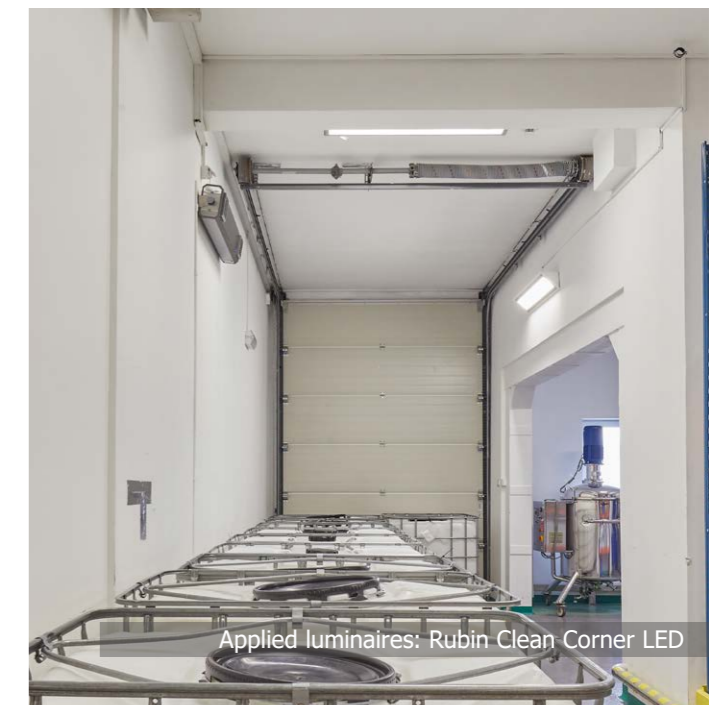
RUBIN CLEAN
CORNER LED



Applied luminaires: Agat Clean Slight LED



Applied luminaires: Agat Clean LED



Applied luminaires: Rubín Clean Corner LED

HUMAN CENTRIC LIGHTING BROCHURE



Humans body receives light through optic detection as well as through non-optic detection with the engagement of optical and nervous systems and also through direct absorption of light photons. Intensity of visual radiation received by retina of human eye has an influence on our optic and image forming-IF.

The process of optic photo detection, that is image creating, consists in receiving light information with photo detectors i.e. rod cells and cone cells. Scientists have demonstrated that light reaching retina also interacts on non-image forming-NIF.

Nowadays, modern lighting offers more than only one optimal visibility. Applying such innovations as Tunable White (TW) and Human Centric Lighting (HCL), LUXIONA Poland employs positive influence of light in order to create more friendly working environments. Our effective lighting systems improve your quality of life.

Do you want to learn more?

Read our new brochure Human Centric Lighting. You will find out about light quality and its influence on our mood. You will learn realisation methods of HCL solutions in luminaires, you will see our tunable white products, which listing we are presenting below. With a full specification you will familiarise yourself in a part of brochure, where we present our products.

Full offer of tunable white products

-  Artshape Three LED Edge
-  Artshape SQ LED Edge
-  Artshape Six LED Edge
-  Artshape Round LED Edge
-  Agat POS LED
-  X-Line Slim LED
-  Agat Clean LED

LUXIONA
Poland

Human Centric Lighting

troll

NEW WEBSITE OF PRODUCT OFFER ON LUXIONA.PL/EN

Our new website presenting product offer it is not only updated look but also improved functionality and newly created documents such as catalogue card or product card. First of all it is characterised by transparent look, clear sorting of luminaires and their categories, itemisation of products in specific family and full name as well as possibility of easy search connected with filter use of main features. The most significant element, however are already mentioned cards: CATALOGUE-containing detailed product photos, examples of use and technical parameters for the whole family; PRODUCT CARD-dedicated for particular index, contains detailed lighting data, electrical and mechanical data presented in transparent form.





MOSAIC LED

System dedicated for 600 x 600 module suspended ceilings. It has a module and segment construction that includes the simple element, the curve, +-shaped element, L-shaped element and T-shaped element. Combination of these elements provides unlimited possibilities of interior lighting arrangement. It is possible to combine the lighting functionality and unique aesthetics of the interior. The location of segments can be altered any time by turning particular plaster boards. Owing to the color diffusers or LED RGB strips it is possible to obtain some extra color effects. The LED system can be easily dimmed what provides some extra energy savings.

Files to download:

-  PDF catalog sheet
-  Installation instruction
-  CE declaration
-  Eulumdat files

MOSAIC LED PART1 1300/2200

Index	Name	Card
OOSMEPL2213BPLX	MOSAIC LED PART1 1300/2200 PLX E 34 830 / BEZ ZASILACZA	
OOSMEPL2213APLX	MOSAIC LED PART1 1300/2200 PLX E 34 840 / BEZ ZASILACZA	

LUXIONA
Poland



MOSAIC LED

Oprawy architektoniczne



LUXIONA
Poland

Karta katalogowa



System przeznaczony jest do sufitów podwieszanych, modułowych 600x600. Budowa modułowa/segmentowa. W skład systemu wchodzi następujące elementy: prosty, łuk, kształt plusa, kształt litery L, kształt litery T. Kombinacje tych elementów dają nieograniczone możliwości aranżacji oświetlenia wnętrza. Można łączyć funkcjonalność oświetlenia z niepowtarzalną estetyką pomieszczenia. W każdej chwili można zmienić położenie segmentów przekraczając poszczególne płyty sufitowe. Stosując kolorowe przesłony lub paski LED RGB można uzyskać dodatkowe efekty kolorystyczne. Systemy LEDowy można łatwo ściemniać uzyskując dodatkowe oszczędności energii elektrycznej.



Biblioteka Publiczna, Konstancin-Jeziorna

LUXIONA
Poland

Product card

Product: MOSAIC LED PART1 1300/2200 PLX E 34 830 / BEZ ZASILACZA
Index: OOSMEPL2213BPLX

Description

System dedicated for 600 x 600 module suspended ceilings. It has a module and segment construction that includes the simple element, the curve, +-shaped element, L-shaped element and T-shaped element. Combination of these elements provides unlimited possibilities of interior lighting arrangement. It is possible to combine the lighting functionality and unique aesthetics of the interior. The location of segments can be altered any time by turning particular plaster boards. Owing to the color diffusers or LED RGB strips it is possible to obtain some extra color effects. The LED system can be easily dimmed what provides some extra energy savings.

Product information

Category: Architectural luminaires
Family: MOSAIC LED
Name: MOSAIC LED PART1 1300/2200 PLX E 34 830 / BEZ ZASILACZA
Index: OOSMEPL2213BPLX
Pictograms: 

Light and electrical data

Light source	LED
Luminous flux LED [lm]	1544/2205
LED power [W]	9/12
Luminaire luminous flux [lm]	865/1235
Power of luminaire [W]	10/14
Light efficiency [lm/W]	87/88
Color of the light [K]	3000
CRI	>80
SDCM	3
Protection against electric shock	I
Protection degree	IP20/40
Voltage	220..240 V, 50..60 Hz
Lifetime of LED sources [h]	100000 (1) / 147000 (2)
Lx/By	L80/B10 (1) / L70/B50 (2)
Operating temperature range [°C]	5 + 30
Driver	standard (E) - not included

Mechanical data

Assembly	mounted in module ceilings
Material	steel sheet
Color	RAL 9016 (white)
Diffuser	PLX (PMMA opał)
Impact resistant	IK04
Weight [kg]	1,08
Dimensions A x B x H [mm]	596 x 95 x 60



APPLICATION OF SPECIALISTIC DIODES OF SELECTED COLOUR IN ANIMAL BREEDING AND PLANT CULTIVATION



During this year conferences we mentioned our listeners about possibility of producing specialistic luminaires with diodes which will light red, green, yellow or blue colour. We would like to explain to our readers in what particular conditions we can apply particular colour taking the example of plants cultivation and poultry breeding. Mentioned below the effects of colours application were confirmed in laboratories by scientists and successfully used by specialized breeders and farmers.

Plants in greenhouses farming conditions, halls or laboratories during growing process mainly absorb artificial light emitted by luminaires. To create perfect conditions for plants it is hard to rely on standard solutions. The same configuration of LEDs for all plants can be acceptable but it will never be perfect because it will not meet the demand of all species. Additionally, numerous and important processes occurring in the course of development-photosynthesis, photo morphogenesis (plants growth), blooming period, require in particular time slots of different light colour, in order to as smoothly as possible accelerate this process and ensure that the light has appropriate wavelength for which plants synthesize in the process of photosynthesis.

The importance of chosen LED colour

Blue - the most effectively acts on high leaf plants.

Red - supports buds and blooming.

Green - allows to visually determine the condition of plant.

Ultraviolet - promotes pigmentation, thickens leaves, prevents from harmful insects.



And so it is in the case of poultry breeding. After many years of researches it turned out that particular light colours have influence on animals behaviour and growth. It has been proven that appropriately selected light causes earlier clutch of chickens or is kind of a stimulator for immune processes in animals organisms. The most important factor is of course the best restoration of daylight along with optimal choice of lighting time and customised colour. Thanks to this we can accelerate birds maturation and increase laying. Except for white light, application of red or blue light is also useful.



Application of monochromatic colour

Blue - blue light, as well as violet light is invisible for birds and it has relaxing and calming effect. It facilitates running cleaning up and other activities for the staff. These colours and additionally green colour also improve a higher weight gain.

Red - has influence on decreasing aggressiveness among birds, which decreases hierarchical fights. Red light prevents from cannibalism and feather-pecking.

Taking into account the information presented above, we know that a product such as a LED luminaire should be equipped with light sources and appropriately chosen white light taint in combination with other taints of precise wavelength, which stimulate among plants and animals desired processes. It is innovative solution and beneficial for economical reasons. Being aware of it, we could familiarise you with our dedicated solutions in these areas of business during summer conferences.



RECOMMENDED PRODUCTS

DOUBLE SPHERE LED



Round, hanging luminaire equipped with highly efficient LED light sources, dedicated for interiors of high stylistic requirements. The product consists of two lighting rings with a possibility of adjustment in relation to one another. Thanks to this we obtain very interesting effect. Dedicated application: representative rooms in buildings such as halls, atria, receptions in shopping centres, museums, offices and many other buildings.

RECOMMENDED PRODUCTS

KUBIK POLE L/T LED



Outdoor luminaire for assembling on a hardened surface (concrete, sett, or basement) equipped with the highly effective power saving LED sources of the newest generation. The system is designed and optimized for lighting streets, parks, gardens. Corrosion resistant extruded aluminium aesthetic housing and special pole arrangement. Easy installation, tool less, easy maintenance. Optimal performance with a glare-free, uniform lighting distribution. Note: Luminaires up to 6 m high can be safely used in the first and third wind zones (according to PN-EN 1991-1-4) and in the third and fourth terrain categories (according to PN-EN 40-3-1: 2004). II wind zone and other terrain categories require an individual assessment of the maximum binding height.

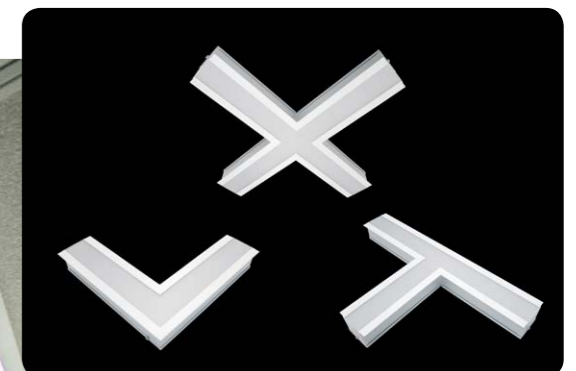
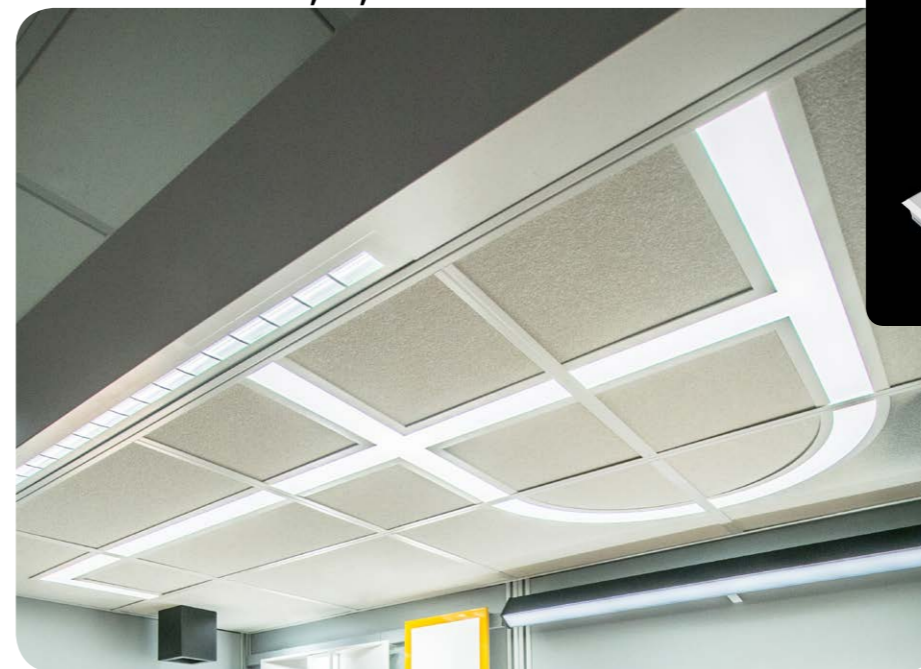


BERYL NEW LED K/ BERYL N NEW LED K

These are square equivalents of presented last year edition Beryl Round. Their most important feature is two level optics adjustability. Additionally, luminaires are available as modules: single, double, triple and quadruple modules in linear or square version. These luminaires are dedicated for prestigious interiors such as hotels, banks, and offices of higher standards.



MOSAIC LED L, T, X



This system is dedicated for suspended modular ceilings 600x600. We present new shapes in a popular Mosaic system: the shape of a plus sign, the shape of letter L and letter T. Combinations of these elements along with standard luminaires (part 1-straight element and part-2 arched element) create unlimited illumination arrangement possibilities of the interior. It is possible to combine lighting functionality with a unique aesthetic of the room. There is a possibility to change the position of the segments by turning particular ceiling panel. By applying colour diffusers or LED RGB straps we achieve additional colour effects. LED system can be easily dimmed so it allows to save energy.

RECOMMENDED PRODUCTS

X-LINE SLIM LED



The luminaire is made of an aluminium profile. Its characteristic feature is the light distribution in the upper and lower half-space. Comparing to the traditional X-Line LED, size of the luminaire has been reduced, and all construction has been closed in a narrow 45 mm profile, which gives now a more elegant form of the product. The X-Line Slim uses a PC and Micro-PRM opal diffuser (intended only for the lower beam). All of this allows to manipulate light and create lighting systems, facilitating the creation of comfortable vision in the interiors and their aesthetic appearance. The X-Line Slim luminaire is designed for mounting on suspensions.

RECOMMENDED PRODUCTS

EUROPANEL CIRCLE LED



A modern LED panel dedicated for mounting in suspended ceilings, directly on a ceiling or on suspensions. The luminaire is equipped with highly efficient LED light sources. The housing is made of aluminium, PMMA opalised diffuser or micro-prismatic with round-shaped grille. Colours of the luminaire-white. Application: public service buildings, offices, conference rooms, classrooms, auditorium, etc.

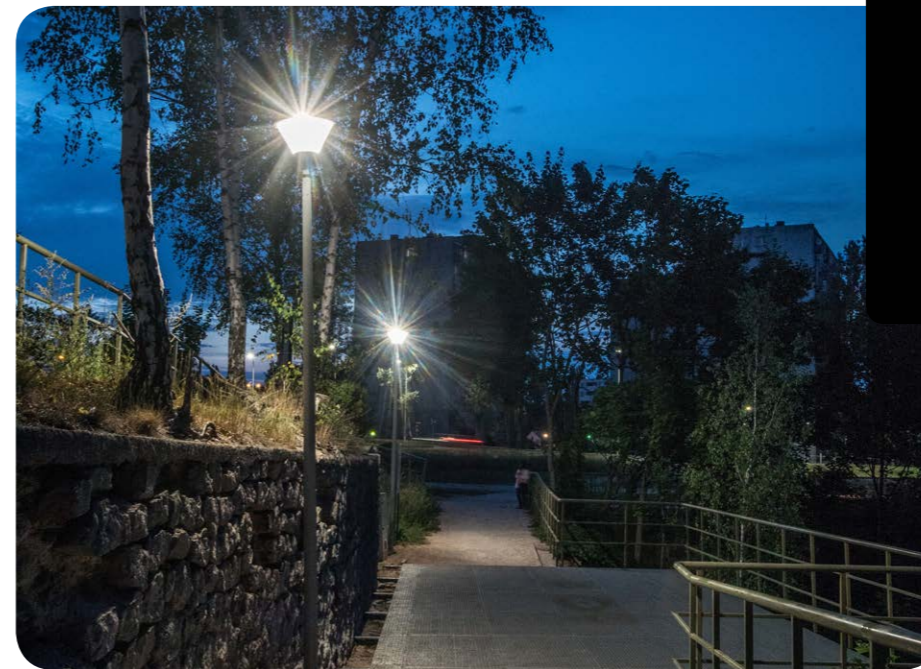


STREETPARK M LED / S LED



Streetpark, in its newest release, it is a modern optics dedicated for street-park illumination. The luminaire is available in two versions: S (small) and M (medium). The housing made of aluminium cast and weather proof powder painted. Power supply compartment can be opened without any tools and scissors type disconnecter automatically cuts off the power supply while the luminaire is being serviced. Luminaire is equipped with adjustable handle designed for mounting on posts and arms of 60 mm diameter. Level of tightness IP66; transparent diffuser made of hardened glass. Following colour temperature is available: 5700 K. Product has a ENEC certificate. It is possible to program an autonomous multi-level or manual power reduction for specific customer needs by using a specialized power supply in the luminaire. The luminaires have overvoltage protection as standard based on the functionality of the power supplies. Optionally, the luminaires can be equipped with an additional voltage surge protector that does not require interference during the assembly and disassembly of the power supply system.

PAREO NEW LED



Outdoor luminaire dedicated for garden and parks, equipped with highly efficient LED sources. A housing made from aluminium cast. Its transparent diffuser is made from polycarbonate which is highly resistant to mechanical factors – IK09. The outer cover provides a very high level of resistance to all atmospheric factors, as well as the luminaire aesthetic design during the whole exploitation process (IP54). Mounting diameter – 60 mm. Luminaire specially recommended to illuminate the squares, parks, and other open spaces.

LUXIONA



OFFICE OF THE MANAGEMENT BOARD /TRADE OFFICE:

LUXIONA Poland S.A. Macierzysz near Warsaw
ul. Sochaczewska 110,
05-850 Ozarow Mazowiecki
sekretariat@luxiona.com

www.luxiona.pl/en

www.luxiona.com

EXPORT DEPARTMENT:

UK, IR
+48 600 987 439
export@luxiona.com

DE, AT, CH, LI
+49 30 40535600
info@luxiona.de

SE, NO, DK, IS, BE, NL, LU
+ 48 505 695 581
export@luxiona.com

LT, EE, FI, RU, UA, LV, BY, MD, GE,
AM, AZ, KZ, UZ, TM, TJ, KG
+ 370 650 22 522
export@luxiona.com

HR, HU, RO, XS, SI
+48 505 695 568
export@luxiona.com

CZ, SK, BA, ME, MK, XK, AL, BG
+ 48 604 442 101
export@luxiona.com

DESIGN DEPARTMENT:

+ 48 22 721 72 29
+ 48 600 460 144
projektanci@luxiona.com

LUXIONA Poland is part of the Spanish LUXIONA Group, which for 90 years has been successfully operating on the international market of the lighting industry. The mission of LUXIONA Poland is to create complementary lighting solutions, in accordance with the most recent technologies as well as legal and social requirements. For that reason, an active team constantly works on innovative technical solutions, keeping in mind the need for saving energy and protecting the environment. The team does not cease to enhance the quality of our products and the efficiency of our services, permanently analyzing the needs of our Customers.

The LUXIONA Group, including LUXIONA Poland which continues to implement the Group strategy, specializes in the composition and creation of indoor and outdoor lighting systems, basing on the vast experts' experience and the broad scope of product brands. An integral part in the offer of LUXIONA Poland are comprehensive lighting solutions, which cover both the production and design services, in the widest sense of the word, delivered by high class designers and ready to meet the requirements of, among others: architectural spaces, areas in the so-called clean rooms, commercial surfaces etc. The LUXIONA Poland team specializes in implementing projects which require an individual approach and the application of modern technologies.